

FOR THE **LEGENDS OF THE ROAD**



THE UPFIT YOU DESERVE

LEGENDSOFTHEROAD.COM

WELCOME TO THE LEGEND UPFIT COLLECTION.



CEILING LIGHTS

Extremely bright, motion-sensor-activated ceiling lights to dramatically enhance the cargo space in a van.

WALL / CEILING / DOOR LINERS

Extremely durable insulated interior liners. Foiled foam insulation creates a thermal barrier while deadening sound. Available in textured grey and smooth white.

GRAB HANDLES

Increase safety for drivers at loading points. High-visibility yellow steel with grippy coating for maximized safety!

WHEEL WELL COVERS

Protect van metal wheel well covers that are most prone to damage by cargo. Foamed foil insulation on back increases noise deadening.



SECURILOCK VAN LOCK

Extremely durable, premium van lock that prevents cargo theft. Made for vans in high-crime urban areas and vocations holding expensive tools.



RIGID FLOORS & RUBBER MATS

Industry-leading anti-slip rigid flooring, and one-piece rubber mats. Maximize safety for drivers while protecting the vehicle.

REAR & SIDE SILL PLATES & THRESHOLDS

Protect vehicle at areas with highest traffic: the entry-points. Maximize safety for drivers getting in and out of the vehicle while holding cargo.




THE UPFIT YOU DESERVE

LEGENDSOFTHEROAD.COM



CONTENTS:

Upfit Collection	2	SecuriGrip Grab Handles	34
Our Purpose	6	Wheel Well Covers	36
We Take The Hits	8	SecuriLock Van Lock	38
Lightening The Load	10	Motion Sensor Ceiling Lights	40
Ride Shotgun	12	FORD Models & Layouts	42
The Importance of Van Floors	14	FORD Part Numbers	44
Collection: Rigid Floors	16	MERCEDES Models & Layouts	52
Collection: Rubber Mats	17	MERCEDES Part Numbers	56
StabiliGrip: The Flagship Rigid Floor	18	GM Models & Layouts	60
EVOLVE: The Lightweight Floor	20	GM Part Numbers	62
AutoMat-Bar: The Flagship Rubber Mat	22	RAM Models & Layouts	64
What Kind of Rigid Floor is Right for Me?	24	RAM Part Numbers	68
The Importance of Van Liners	26	3D Configurator	72
Collection: Van Liners	28	The Floor of the Future is Coming	74
Collection: SecuriGrip & Accessories	29	Logo Breakdown	76
Insulated DuraTherm: The Ultimate Liner	30	Contact	78
SecuriGrip Thresholds	32		



**LIFE ON THE ROAD CAN BE HARD,
UNCOMFORTABLE AND UNRELENTING.
THE EVERYDAY HEROES OUT THERE
DESERVE A BETTER DAY.**

OUR PURPOSE:

**IMPROVE THE RIDE FOR THE
LEGENDS OF THE ROAD**



THE UPFIT YOU DESERVE

LEGENDSOFTHEROAD.COM



WE TAKE THE HITS

Reducing the impact of life on the road,
for you and your van.

KEEP YOUR PEOPLE SAFE

Everything we do at legend is geared towards improving the well-being of drivers, and their vans.

PROTECT YOUR ASSETS

Our products are the toughest out there — so whatever the workload, adding Legend means your vehicles will hold their value.

WORKSPACE THAT WORKS

Upfitting with Legend means you're not only protecting your vehicle assets, but also providing a safer more effective workplace for drivers — improving the ride for the legends of the road.

DENT RESISTANT

Improved protection and health and safety means your productivity won't take a hit. A legend upfit will ensure drivers are working safely, and effectively out on the road — and that your fleet is fit for the long haul.



THE UPFIT YOU DESERVE

LEGENDSOFTHEROAD.COM



LIGHTEN THE LOAD

Lighter liners and floors for ease of install
with the future of electric vehicles in mind.

LIGHTWEIGHT AS STANDARD

Our liners are lightweight to start with, and we have developed the industry's lightest rigid floor EVOLVE, providing vital range savings in any EV fleet.

RECYCLED AND RECYCLABLE

All Legend products are fully recyclable and made from at least 70% recycled material!

THE FIRST CHOICE FOR EV FLEETS

We're constantly developing our products to ensure we're going to be the leading partner for the fleets of the future—we're already light-years ahead of the competition.



THE UPFIT YOU DESERVE

LEGENDSOFTHEROAD.COM

RIDE SHOTGUN

The first partner of choice for the
North American upfitter.

HAZLETON, PA - Legend Dealer Sales Walt Coulter shakes hands with Al Cicioni, of Cicioni's Commercial Vehicle HVAC. Photo taken during a "Riding Shotgun" Episode, where Legend visits Distributors throughout North America. Walt gave Al's coat back, we promise!

PROVEN PRODUCTS

Our products are proven on fleets from 3 to 30,000 vehicles that's why we have one of the largest networks of upfitters in North America.

EASY INSTALL

We know how important it is that vans are on the road and working. Legend products are very quick to install and provide labour savings for the installers.

IN STOCK AND ON TIME

Reliable stock levels and super-fast delivery... it's not rocket-science, but it's one of the reasons we're the partner of choice for upfitters.

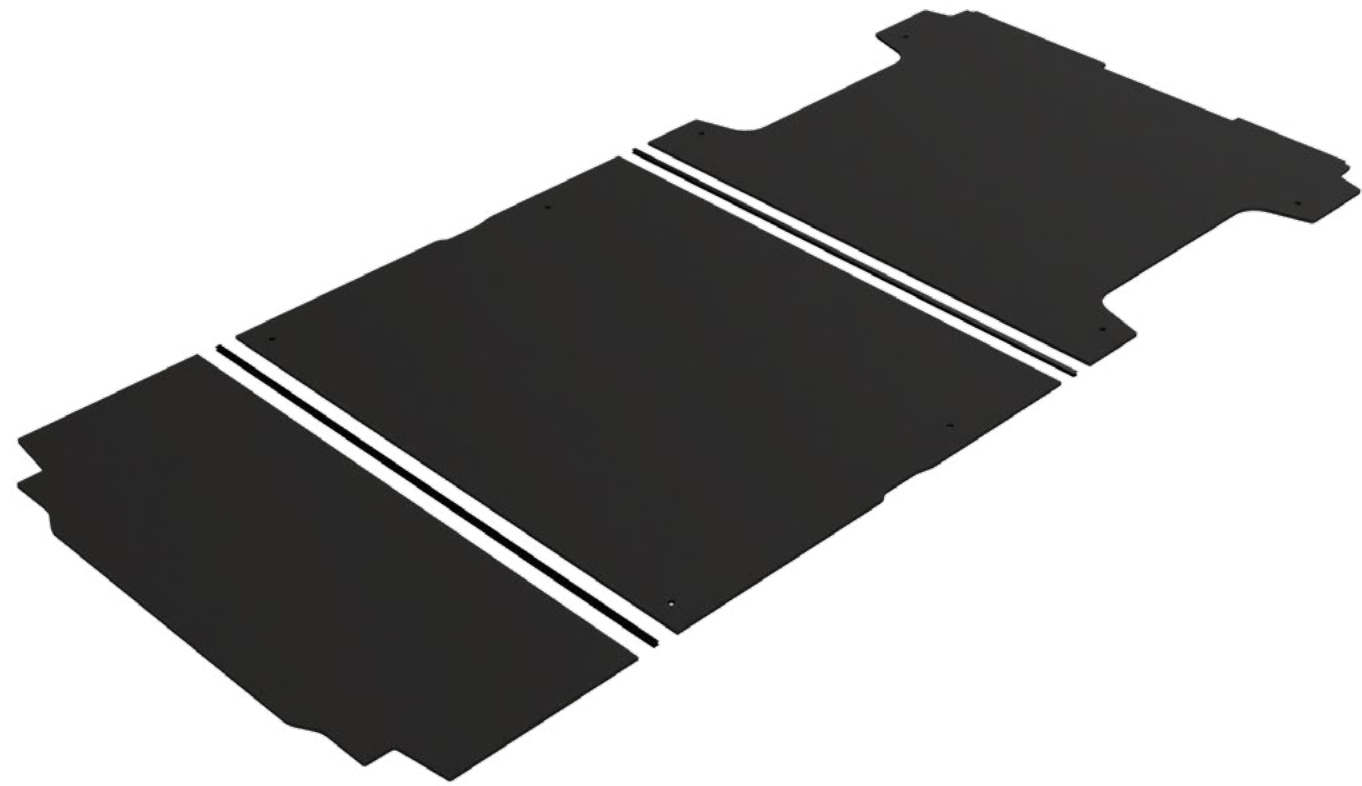
EXPERT SUPPORT CREW

Our expert customer care team are always on-hand to provide product and installation advice, so upfitters can get vans rolling out, fast.



THE UPFIT YOU DESERVE

LEGENDSOFTHEROAD.COM



WHY DO YOU NEED A **RIGID FLOOR** IN YOUR VAN?

- Eliminates the unevenness of the factory steel floor with ribs to create a flat working surface.
- Anti-slip surface makes it safe for drivers to walk on in all weather conditions during their day
- Protects the bare metal van floor from damage
- Creates the foundation for a professional and tidy cargo space to represent brand
- Easy to clean & maintain



FLAGSHIP PRODUCT
STABILIGRIP

THE FLAGSHIP FLOOR
 Heavy-duty, widely-used, all-purpose, anti-slip-yet-skid-slideable van floor used by a wide range of vocations to maximize driver safety and productivity.
 page 18



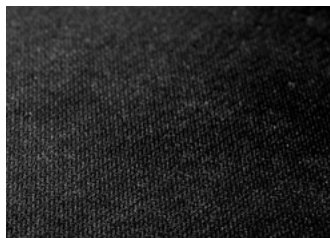
FLAGSHIP PRODUCT
EVOLVE

THE LIGHTWEIGHT FLOOR
 Lightweight floor designed for electric vehicles. No-drill. No-plywood. Made of 75% recycled material!
 page 20

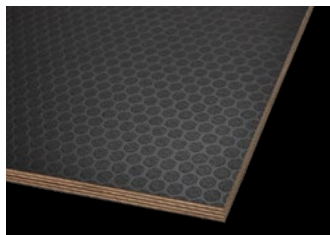
WHAT IS A FLAGSHIP PRODUCT?

Legend flagship products are highly recommended, most popular, most widely available, and most often stocked by Legend distributors.

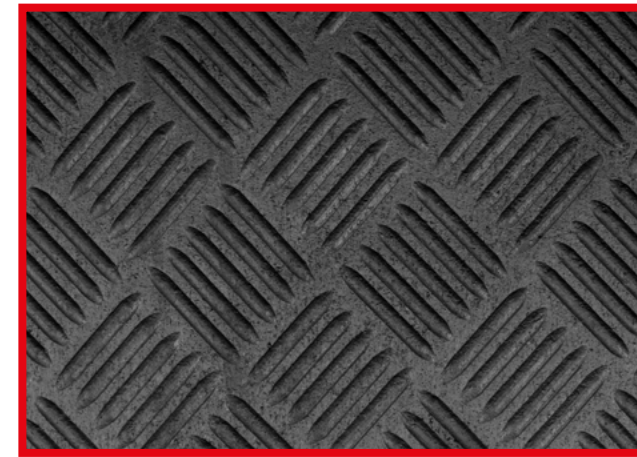
OTHER RIGID FLOORS



ECONOFLOOR
THE ECONOMY FLOOR
 Similar to our flagship floor StabiliGrip, EconoFloor is grippy and all-purpose, but thinner.

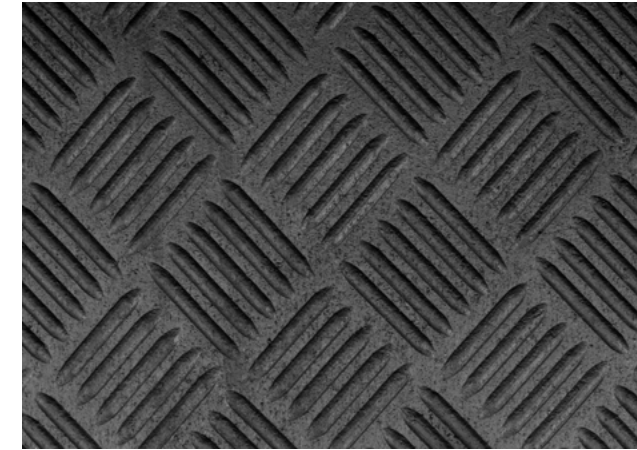


KK-PLUS
THE COATED PLYWOOD FLOOR
 Phenolic resin birch plywood one-piece floor for sliding skids & cargo.



FLAGSHIP PRODUCT
AUTOMAT-BAR

THE FLAGSHIP RUBBER MAT
 One-piece rubber mat for protection of chassis floor and grip for driver safety.
 page 22



ECONOMAT
THE THINNER RUBBER MAT

One-piece budget friendly mat for protection of chassis floor. Thinner than AutoMat-Bar.

Shown: Complete Kit of Legend's Flagship Interior Protection Products in a Mercedes Sprinter Van.



FLAGSHIP PRODUCT

STABILIGRIP

THE FLAGSHIP RIGID FLOOR



StabiliGrip has proved itself as the industry-leader of cargo van floors.

Our flagship floor is a heavy-duty composite material made from recycled materials, used by some of the biggest fleets & OEM's in North America.

Its unique fine grip gives it the ability to slide cargo and still provide an extreme anti-slip surface for driver safety, making it unbeatably versatile for vocations of all kinds.



1/2" COMPOSITE LOW-DENSITY POLYETHYLENE

- FLAT, ANTI-SLIP WORK SURFACE FOR MAXIMIZED DRIVER SAFETY & PRODUCTIVITY
- FINE GRIP ALLOWS BOTH CARGO SLIDING AND ANTI-SLIP
- DIMENSIONALLY STABLE - WILL NOT WARP IN EXTREME TEMPERATURES
- IMPACT/PUNCTURE RESISTANT
- CHEMICAL/MOISTURE-RESISTANT
- EASY-TO-CLEAN

FLAGSHIP PRODUCT

EVOLVE THE LIGHTWEIGHT FLOOR

Extremely lightweight, no-drill, anti-slip composite rigid floor, designed for electric vehicles.

Already upfit in several thousand last-mile delivery E-Transits, Legend's EVOLVE Lightweight Floor is fast-gaining a name in the industry. Deemed the "floating floor", it comes with no-drill inserts for d-rings and shelving to literally "float" on the chassis ribs.

Made from 75% recycled material and 53% lighter than Legend's StabiliGrip, EVOLVE is the most sustainable, lightweight, and safe floor available for electric vehicles.



1/2" COMPOSITE LOW-DENSITY POLYETHYLENE TEREPHTHALATE

- FLAT, ANTI-SLIP WORK SURFACE FOR MAXIMIZED DRIVER SAFETY & PRODUCTIVITY
- NO-DRILL-INTO-CHASSIS FASTENER KIT
- EXTREMELY LIGHTWEIGHT (53% LIGHTER THAN STABILIGRIP) TO PRESERVE RANGE OF ELECTRIC VEHICLES
- SUSTAINABLE PRODUCT MADE FROM 75% RECYCLED MATERIAL

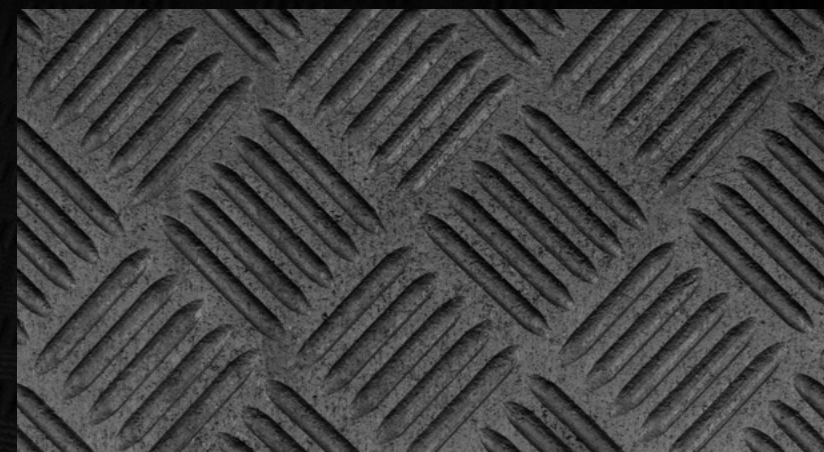


FLAGSHIP PRODUCT

AUTOMAT THE FLAGSHIP RUBBER MAT



All-purpose, one-piece mat for base protection of bare metal van floor and some grip for drivers in the cargo space.



1/4" RUBBER MAT

- INCREDIBLE TRACTION FOR ANTI-SLIP
- HEAVY DUTY INDUSTRIAL STRENGTH
- ONE PIECE MAT; NO JOINTS
- 1/4" THICK VIRGIN RUBBER COMPOUND WITH CHECKER-PLATE BAR TOP SURFACE
- TEAR RESISTANT
- CHEMICAL/MOISTURE RESISTANT
- VIRTUALLY ODOUR-FREE
- EASY TO CLEAN

SO WHICH TYPE OF FLOORING MAKES SENSE FOR MY VAN?

	Anti-Slip/ Safe for walking on	Rigid, Flat Surface	One-Piece Floor	Heavy-Duty	Lightweight
STABILIGRIP	✓	✓		✓	
EVOLVE	✓	✓			✓
AUTOMAT-BAR	✓		✓		✓



My overall favorite van floor on planet Earth is Legend's StabiliGrip. With Extreme Durability now well proven, it is the best all purpose floor option for your cargo van —offering a rigid composite floor deck, with anti-slip top surface even when wet, multi-piece for easy installation, no issues with expansion/contraction, non-wood, and will never rot or splinter. It can be bolted to or thru. You can roll carts on it, walk safely on it, drop tools on it, you name it! Heavy Duty, Stability and Grip, count on it all, in StabiliGrip.

- WALT COULTER, Dealer Sales @ Legend



*Shown: A collection of Legend's
Flagship Interior Protection
Products in a Mercedes
Metris Van.*



WHY DO YOU NEED INTERIOR LINERS IN YOUR VAN?

WALL LINER

Protects bare van and wrap from damage to make the vehicle last longer, acts as a thermal barrier from extreme temperatures both hot and cold, and brightens up the cargo space for those in it every day.

CEILING LINER

Creates a thermal barrier to mitigate extreme heat from the summer sun for driver comfort, and completes cargo space insulation when paired with wall liner.

DOOR LINER

Protect the sheet metal or the glass in the window cavities from moving objects inside the van that could cause potential damage such as dents or broken windows.



FLAGSHIP PRODUCT
INSULATED DURATHERM

THE ULTIMATE INTERIOR LINER

Extremely durable insulated liner to protect van from damage and create a thermal barrier for temperature control in the cargo space. Available for Ceiling, Wall, and Doors.

page 30



ECONOLITE

THE ECONOMY INTERIOR LINER

Budget-friendly liner for base protection used in applications where minimal protection without insulation is necessary.



FLAGSHIP PRODUCT
WHEEL WELL COVERS

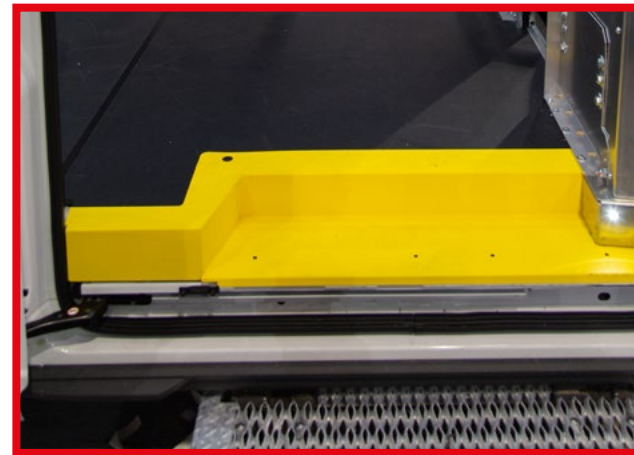
THE WHEEL PROTECTOR

Wheel wells are the first in a van to get damaged. Protect them with these covers while reducing road noise.

page 36

WHAT IS A FLAGSHIP PRODUCT?

Legend flagship products are highly recommended, most popular, most widely available, and most often stocked by Legend distributors.



FLAGSHIP PRODUCT
STEEL THRESHOLDS

THE HIGH-VIS SAFETY STEPS

Extremely grippy yellow or black steel side and rear thresholds to maximize safety for drivers getting in and out of the van.

page 32



FLAGSHIP PRODUCT
GRAB HANDLES

THE HIGH-VIS GRIPPY HANDLES

Extremely grippy rear door grab handles to help drivers get in and out of vehicle.

page 34



FLAGSHIP PRODUCT
SECURILOCK

THE PREMIUM VAN LOCK

Extremely durable, premium van lock that prevents cargo theft. European-made, best lock on the market.

page 38



FLAGSHIP PRODUCT
CEILING LIGHTS

THE VERY BRIGHT LIGHT

Extremely bright, motion-sensor-activated Ceiling Lights to dramatically enhance the cargo space in a van.

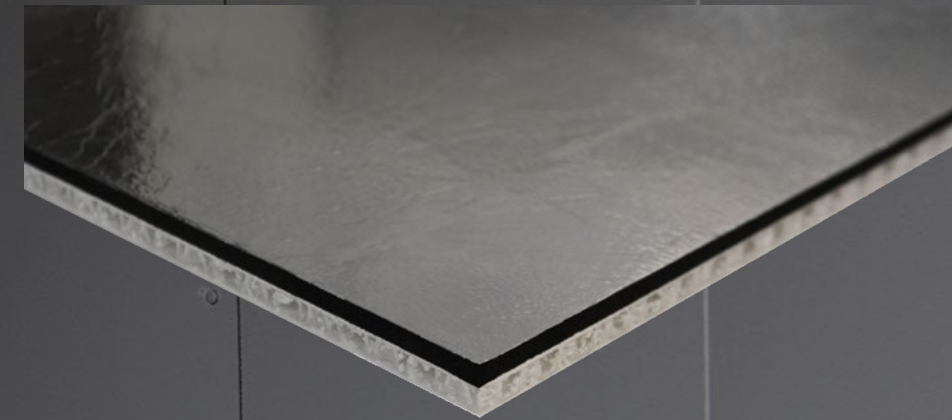
page 40

FLAGSHIP PRODUCT

INSULATED DURATHERM THE ULTIMATE LINER

Insulated DuraTherm Wall, Ceiling, and Door Liners protect bare van panels from the harshest wear and tear, and create a thermal barrier to control temperatures in the cargo areas.

Highly durable and impact resistant, these liners provide superb side panel protection to increase the lifespan and resale value of the vehicle. The foiled foam insulation deadens sound significantly to enhance operator workspaces, while creating a thermal barrier to control temperatures and maximize driver comfort.



3/8" POLYPROPYLENE INSULATED INTERIOR LINER FOR WALL, CEILING, AND DOOR LINER

- SOUND DEADENING
- IMPACT / PUNCTURE RESISTANT
- LIGHTWEIGHT & EASY TO INSTALL
- PRECISION CUT TO FIT VEHICLE
- THERMAL BARRIER - INSULATES VAN
- AVAILABLE IN TEXTURED GREY ROR ULTIMATE SCRATCH RESISTANCE
- OR SMOOTH WHITE FOR BRIGHT INTERIORS
- PROFESSIONAL BRAND IMAGE



FLAGSHIP PRODUCT

STEEL THRESHOLDS

Extremely grippy yellow or black steel side and rear thresholds to maximize safety for drivers getting in and out of the van. Now available for all makes!



14 gauge steel with a special vacuumized coating that is both sturdy and non-slip. More durable than the standard factory fitted thresholds, helping to protect the entrances of cargo vans.

- MAXIMIZED PROTECTION FOR HIGHEST TRAFFIC AREAS
- POWDER-COATED STEEL FOR HIGH GRIP/WEAR
- HEAVY DUTY, EXTREMELY DURABLE
- HIGH-VIS YELLOW MAKES IT EASY FOR DRIVERS TO SEE
- MAKE BRAND STATEMENT WITH CUSTOM COLOUR - AVAILABLE FOR CARGO VAN FLEETS!



FLAGSHIP PRODUCT

GRIPPY GRAB HANDLES

Extremely grippy rear door grab handles to help drivers get in and out of the vehicle.



14 gauge steel with a special vacuumized yellow coating.

- INCREASE SAFETY & EFFICIENCY BY ALLOWING OPERATORS TO LOAD IN AND OUT QUICKLY AND IN ALL WEATHER CONDITIONS, ESPECIALLY AT NIGHT
- MAKE BRAND STATEMENT WITH CUSTOM COLOUR COATING FOR CARGO VAN FLEETS
- AVAILABLE AS SET OF 2 FOR FORD TRANSIT & RAM PROMASTER



FLAGSHIP PRODUCT

WHEEL WELL COVERS

Wheel wells are the first in a van to get damaged. Protect them, and reduce road noise, with these Wheel Well Covers available for Ford, RAM, and Mercedes Single Rear Wheel Sets.



- **PROTECTION:** Covers allow full protection of all bare metal panels. In a cargo van, the wheel wells are one of the first things to dent and damage quickly, because of cargo loading in and out.
- **DECREASE ROAD NOISE:** significantly deaden loud wheel and road noise by closing in wheel wells with extra padding.
- **THERMAL BARRIER:** with layers of insulation, wheel well covers complete the insulation of the van's interiors.
- **PROFESSIONAL APPEARANCE:** enhance your brand and mobile workforce appearance.

Shown: Bare Wheel Well Cover after only 3 months of vehicle use! All it takes is one pallet or piece of cargo to damage it. Wheel Well Covers prevent all of this!



FLAGSHIP PRODUCT

SECURILOCK

PREMIUM VAN LOCK



Extremely durable, premium van lock that prevents cargo theft. Made for vans in high-crime urban areas and vocations holding expensive tools, equipment, and/or cargo, this European-made lock is quickly gaining a name as the leading lock in the van market.



- HARDENED STEEL LOCK BODY - ANTI-CUTTING, ANTI-DRILLING
- WEATHER & RUST PROOF - ZINC & NICKEL COATING
- HIGH SECURITY KEY - DIFFICULT TO REPLICATE - EACH LOCK COMES WITH 3 KEYS
- EMERGENCY RELEASE CABLE - SAFETY FOR DRIVER INSIDE
- SLAM OR DEAD LOCK VERSIONS AVAILABLE
- UNIVERSAL TO ALL VEHICLE TYPES

SECURILOCK	PUCK-STYLE LOCKS
Hardened steel body	Steel body
Weather-proof (Zinc+Nickel coating)	Aluminium protection
High Security Key, hard to duplicate	Simple key
Anti-cutting body	Easy to cut (soft material)
Anti-drilling body (key protection)	Easy to drill (not anodized)
Permanently fitted on vehicle door (comfortable usage)	Removable lock each time the doors are opened (uncomfortable usage)
Automatic & Manual locking	Manual locking
Master Key & Key alike available	Not indicated
Compensate vehicle body twisting & dropping doors	Not indicated
Emergency Escape from inside the loading area	No emergency escape
Universal lock kit	Lock kit per vehicle brand & model
Installation time: 20 minutes per door	Installation time: 30 minutes per door

WATCH
HOW TO
INSTALL

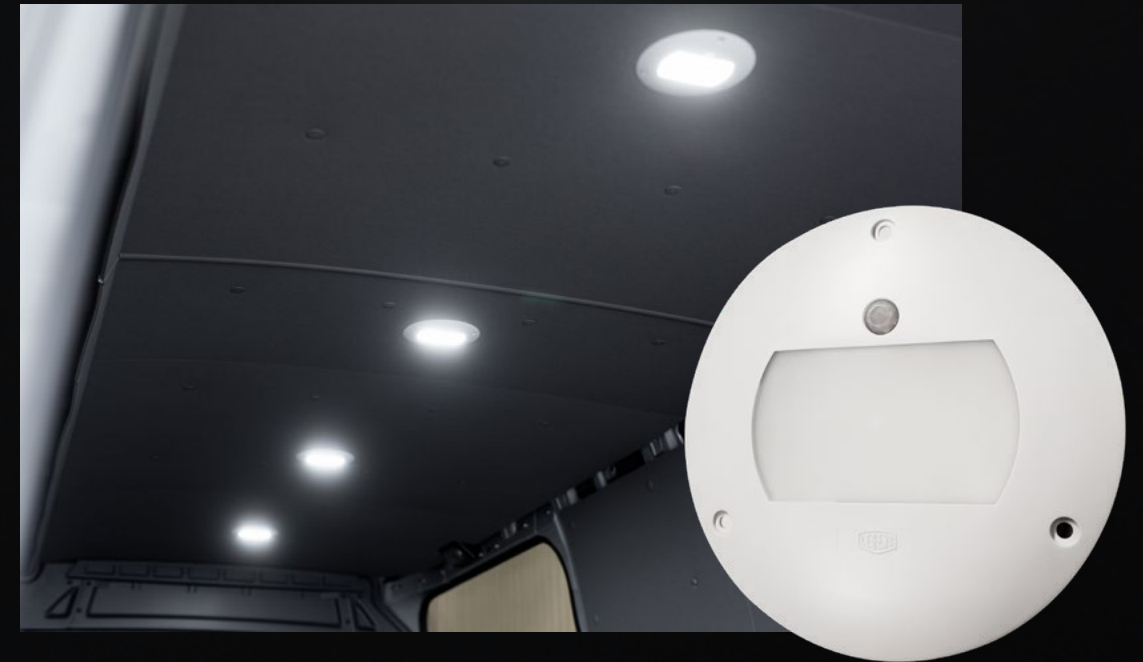


FLAGSHIP PRODUCT

MOTION SENSOR CEILING LIGHTS



Extremely bright, motion-sensor-activated premium ceiling lights to dramatically enhance the cargo space.



- MOTION-SENSOR ACTIVATED, ENERGY SAVING
- VERY BRIGHT LIGHTS (1800 LUMENS EACH, COMPARED TO 2100 AVERAGE LUMENS FOR AN ENTIRE LIGHT STRIP)
- ULTRA WIDE LIGHT SPREAD
- ALL-IN-ONE "COMPLETE ASSEMBLY" SYSTEM
- FAST & EASY TO INSTALL WITH PLUG & PLAY WIRING CONNECTIONS, SIMPLE TO CONNECT TO VEHICLE POWER
- LOW-PROFILE LIGHTS, ULTRA-WIDE LIGHTSPREAD
- HIGH QUALITY, LONG-LASTING, EUROPEAN MADE LIGHTS
- COMES IN 2, 3, or 4 LIGHT KITS.

Shown: Motion Sensor Ceiling Lights at night. Check out how bright these are - and the incredible lightspread onto the area beside the van!



WATCH
VIDEO



FORD



MODELS:

TRANSIT CONNECT (105") SWB

TRANSIT CONNECT (121") LWB

TRANSIT 130" WB LR, MR

TRANSIT 148" WB LR, MR, HR

TRANSIT 148" EXT. WB

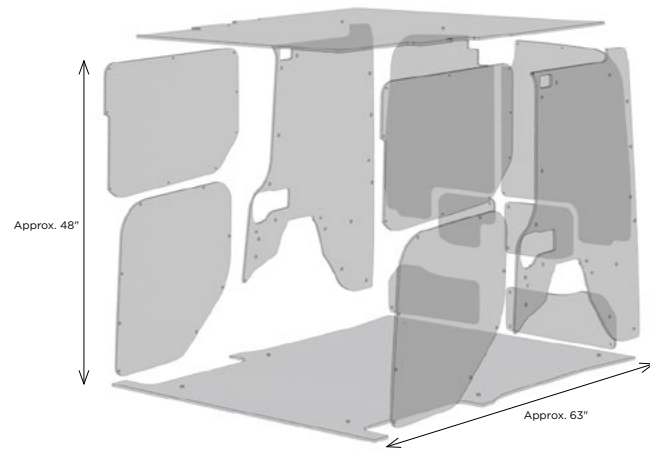
TRANSIT 130" WB CREW LR, MR

TRANSIT 148" WB CREW LR, MR, HR

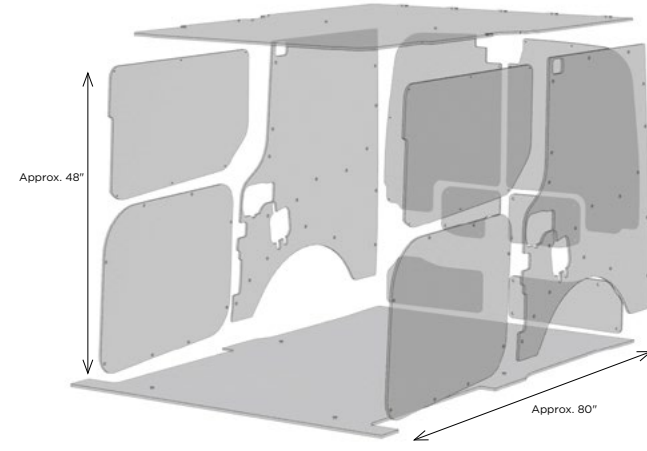
TRANSIT 148" EXT. WB CREW



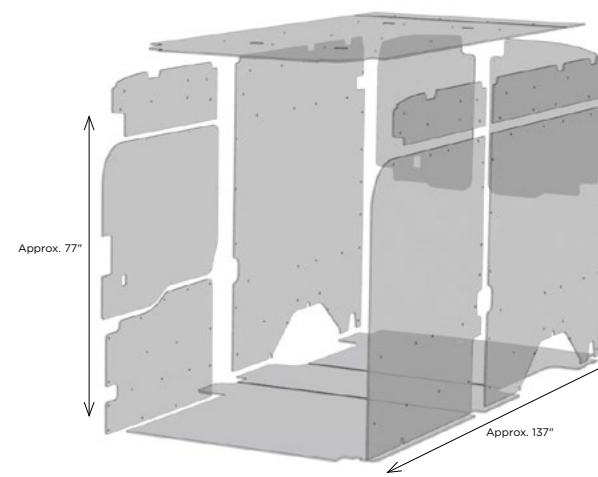
TRANSIT CONNECT (105") SWB



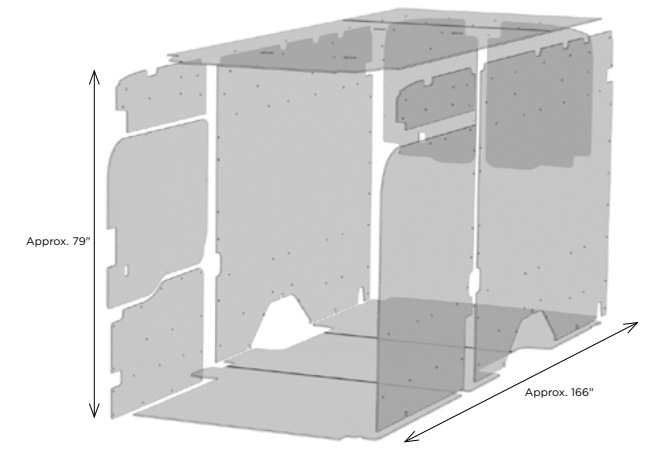
TRANSIT CONNECT (121") SWB



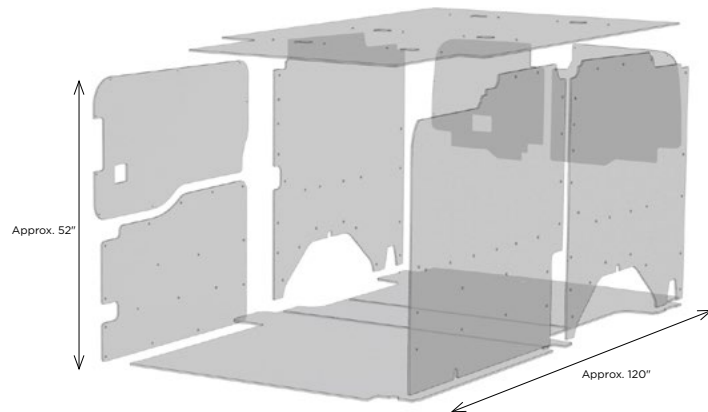
TRANSIT 148" WB HR



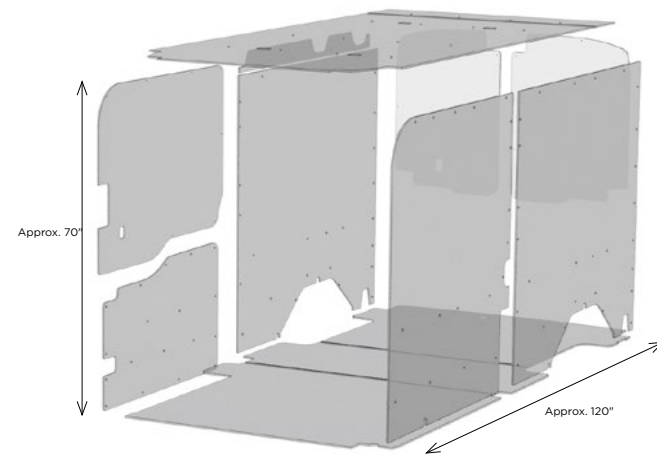
TRANSIT 148" EXT. WB



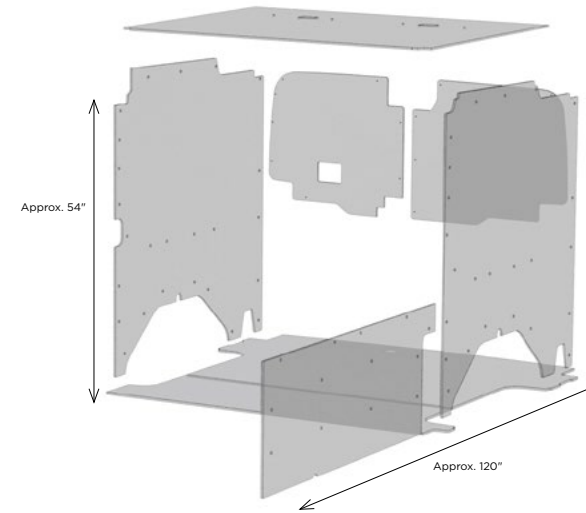
TRANSIT 130" WB LR



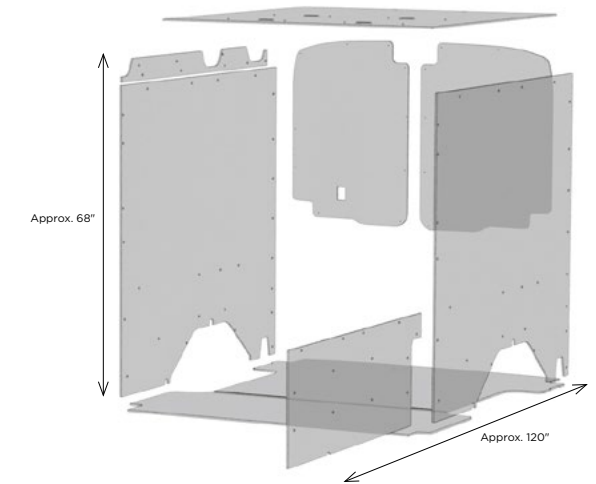
TRANSIT 130" WB MR



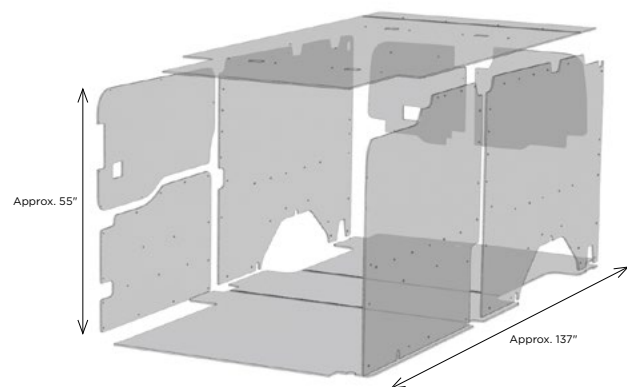
TRANSIT 130" WB CREW LR



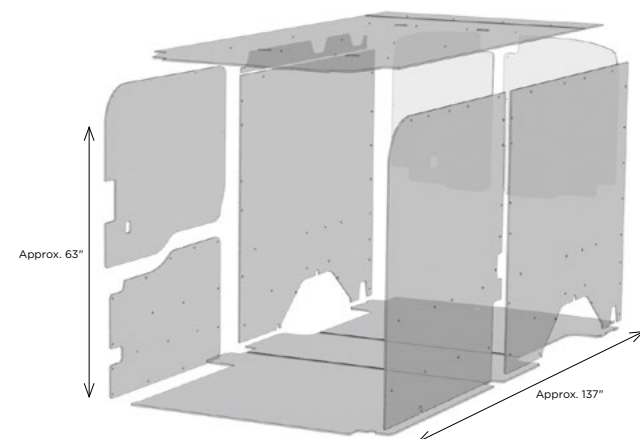
TRANSIT 130" WB CREW MR



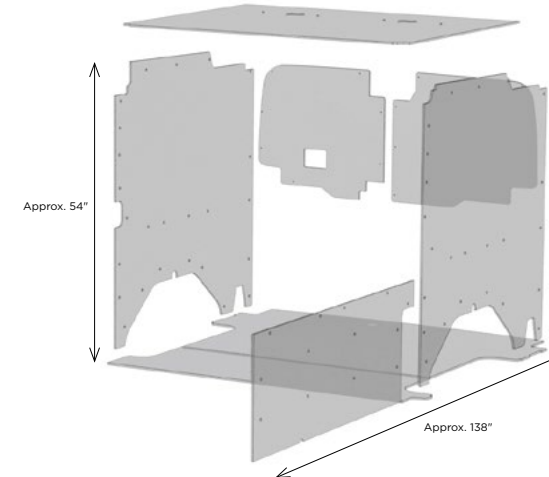
TRANSIT 148" WB LR



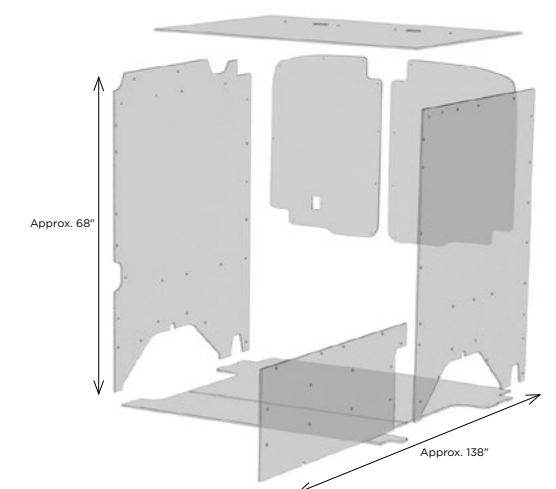
TRANSIT 148" WB MR



TRANSIT 148" WB CREW LR



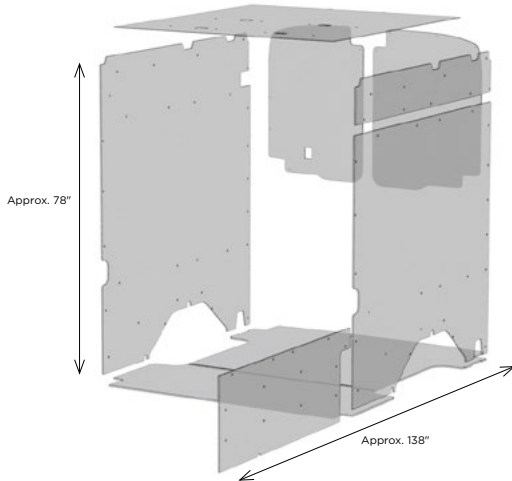
TRANSIT 148" WB CREW MR



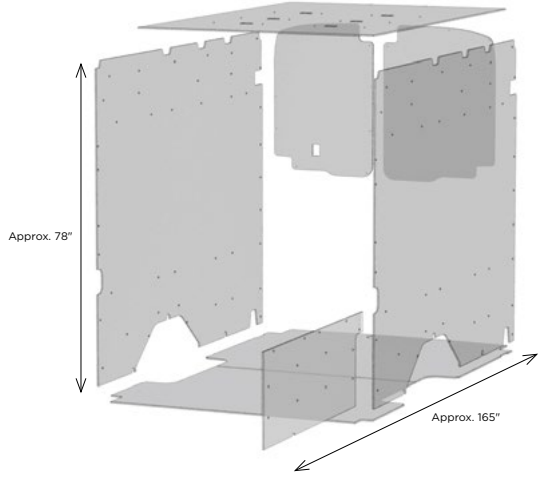
FORD PRODUCT-IN-VEHICLE LAYOUTS

Drawings intended to show how parts arrange in their respective, specific vehicles. Drawings not to scale.

TRANSIT 148" WB CREW HR



TRANSIT 148" EXT. WB CREW



Legend Complete Kit in Transit 130" Low-Roof Van. Shown: StabiliGrip Rigid Floor, Insulated DuraTherm Wall, Ceiling, and Door Liner, Yellow Side and Rear Step Thresholds, Wheel Well Covers.



TRANSIT CONNECT SWB



TRANSIT CONNECT LWB



TRANSIT/E-TRANSIT 130"



TRANSIT/E-TRANSIT 148"



TRANSIT/E-TRANSIT 148" EXT.

FLAGSHIP FLOORS

StabiliGrip Rigid Floor with Sills	711-135-6441.U	41 lbs	721-135-6541.U*	34 lbs	731-135-6441	130 lbs	741-135-6441	146 lbs	751-135-6441	114 lbs
StabiliGrip Rigid Floor w/o Sills	712-135-6441.U	41 lbs	722-135-6541.U	34 lbs	732-135-6441	130 lbs	742-135-6441	146 lbs	752-135-6441	114 lbs
EVOLVE Lightweight Floor with Sills	711-123-6441	19 lbs	721-123-6541	24 lbs	731-123-6441	55 lbs	741-123-6441	64 lbs	751-123-6441	79 lbs
EVOLVE Lightweight Floor w/o Sills	712-123-6441	19 lbs	722-123-6541	24 lbs	732-123-6441	55 lbs	742-123-6441	64 lbs	752-123-6441	79 lbs
AutoMat-Bar Rubber Mat with Sills	711-043-7021.U	26 lbs	721-043-7521.U	34 lbs	731-043-7621	66 lbs	741-043-7321	66 lbs	751-043-7021	93 lbs
AutoMat-Bar Rubber Mat w/o Sills	711-043-7021.U	22 lbs	722-043-7521.U	30 lbs	732-043-7621	66 lbs	742-043-7321	66 lbs	752-043-7021	93 lbs

OTHER FLOORS

EconoFloor Rigid Floor	01F01-33	37 lbs	01F02-33	45 lbs	01F03-33	100 lbs	01F04-33	100 lbs	01F05-33	128 lbs
KK-Plus Plywood Floor	711-112-4442	40 lbs	721-112-4542	49 lbs	731-112-4642	111 lbs	741-112-4642	119 lbs	751-112-4642	138 lbs

WHEEL WELL COVERS

Transit Wheel Well Cover Set					7-WWC-11	7 lbs	7-WWC-11	7 lbs	7-WWC-11	7 lbs
------------------------------	--	--	--	--	----------	-------	----------	-------	----------	-------

WALL LINER

Insulated DuraTherm Wall Liner (Grey)	714-114-2613	18 lbs	724-114-2613	18 lbs	734-114-2613*	30 lbs	745-114-2613*	36 lbs	754-114-2613	60 lbs
Insulated DuraTherm Wall Liner (White)	714-114-2614	18 lbs	724-114-2614	18 lbs	734-114-2614*	30 lbs	745-114-2613*	36 lbs	754-114-2613	60 lbs
EconoLite Wall Liner (Light Grey)	05F01-20	15 lbs	05F02-20	15 lbs	05F03-20*	26 lbs	05F04-20*	28 lbs	05F05-20	30 lbs

CEILING LINER

Insulated DuraTherm Ceiling Liner (Grey)	715-114-2613	18 lbs	725-114-2613	18 lbs	735-114-2613*	30 lbs	745-114-2613*	36 lbs	755-114-2613	41 lbs
Insulated DuraTherm Ceiling Liner (White)	715-114-2614	18 lbs	715-114-2614	18 lbs	735-114-2614*	30 lbs	745-114-2614*	36 lbs	755-114-2614	41 lbs
Motion Sensor Ceiling Lights (Set of 2/3/4)	LK1-121-02	5 lbs	LK1-121-02	5 lbs	LK1-121-02	5 lbs	LK1-121-03	6 lbs	LK1-121-04	7 lbs

DOOR LINER

Insulated DuraTherm Door Liner (Grey)	713-114-2613	10 lbs	723-114-2613	10 lbs	703-114-2613*	18 lbs	703-114-2613*	18 lbs	703-114-2613*	18 lbs
Insulated DuraTherm Door Liner (White)	713-114-2614	10 lbs	723-114-2614	10 lbs	703-114-2614*	18 lbs	703-114-2614*	18 lbs	703-114-2614*	18 lbs
EconoLite Door Liner (Light Grey)	07F01-20	8 lbs	07F02-20	8.5 lbs	07F00-20*	10 lbs	07F00-20*	10 lbs	07F00-20*	10 lbs

SECURIGRIP ACCESSORIES

Steel Floor Threshold Set (Yellow)					U709-151-1011	12 lbs	U709-151-1011	12 lbs	U709-151-1011	12 lbs
Steel Floor Threshold Set (Black)					U709-151-1018	12 lbs	U709-151-1018	12 lbs	U709-151-1018	12 lbs
Transit Yellow Grab Handles Set					11F00-40	10 lbs	11F00-40	10 lbs	11F00-40	10 lbs

VAN LOCKS

SecuriLock - Double Lock Set	SL1-021-002	20 lbs	SL1-021-002	20 lbs	SL1-021-002	20 lbs	SL1-021-002	20 lbs	SL1-021-002	20 lbs
------------------------------	-------------	--------	-------------	--------	-------------	--------	-------------	--------	-------------	--------

INSTALL TIMES*

Floors	30 minutes
Wall Liners	45 minutes
Ceiling Liners	75 minutes
Door Liners	30 minutes
Accessories	20 minutes

* Install times are averages, based on feedback from professional, experienced installers of Legend product.

***All part numbers shown in this brochure are standard configuration for simplification. Roof height & non-standard configurations must be added to part numbers when ordering, see to the right.**

Legend will not be held responsible for parts that are ordered incorrectly (i.e. for the wrong roof height vehicle).

ROOF HEIGHTS

Add to the end of the part number
i.e. 731-043-7621.MR

.LR	Low Roof
.MR	Mid Roof
.HR	High Roof

CONFIGURATION EXTENSIONS

Add to the end of the part number i.e. 741-135-6441.2

.1	Dual Wheels	.9	Dual Wheels and OEM Trim
.2	Dual Side Sliding Doors	.N	No Side Doors
.3	Hinged Side Doors	.A	Rear AC
.4	with OEM door trim	.Y	Pro-Power on Board (E-Transit)
.5	Dual Doors and Dual Wheels		



TRANSIT 130" WB CREW



TRANSIT 148" WB CREW



TRANSIT 148" EXT. CREW

FLAGSHIP FLOORS

StabiliGrip Rigid Floor with Sills	73C1-135-6441	63 lbs	74C1-135-6441	64 lbs	73C1-135-6441	82 lbs
StabiliGrip Rigid Floor w/o Sills	73C1-135-6441	63 lbs	74C2-135-6441	64 lbs	73C2-135-6441	82 lbs
EVOLVE Lightweight Floor with Sills	73C1-123-6441	33 lbs	74C1-123-6441	33 lbs	73C1-123-6441	40 lbs
EVOLVE Lightweight Floor w/o Sills	73C2-123-6441	33 lbs	74C2-123-6441	33 lbs	73C2-123-6441	40 lbs
AutoMat-Bar Rubber Mat with Sills	73C1-043-7621	19 lbs	74C1-043-7321	20 lbs	73C1-043-7621	66 lbs
AutoMat-Bar Rubber Mat w/o Sills	73C2-043-7621	19 lbs	74C2-043-7321	20 lbs	73C2-043-7621	66 lbs

OTHER FLOORS

EconoFloor Rigid Floor	01CF03-33	56 lbs	01CF04-33	56 lbs	01CF05-33	128 lbs
KK-Plus Plywood Floor	73C1-112-4642	111 lbs	74C1-112-4642	119 lbs	75C1-112-4642	138 lbs

WHEEL WELL COVERS

Transit Wheel Well Cover Set	7-WWC-11	7 lbs	7-WWC-11	7 lbs	7-WWC-11	7 lbs
------------------------------	----------	-------	----------	-------	----------	-------

WALL LINER

Insulated DuraTherm Wall Liner (Grey)	73C4-114-2613*	30 lbs	74C4-114-2613*	36 lbs	75C4-114-2613	44 lbs
Insulated DuraTherm Wall Liner (White)	73C4-114-2614*	30 lbs	74C4-114-2614*	36 lbs	75C4-114-2614	44 lbs
EconoLite Wall Liner (Light Grey)	05CF03-20*	24 lbs	05CF04-20*	28 lbs	05CF05-20	36 lbs

CEILING LINER

Insulated DuraTherm Ceiling Liner (Grey)	73C5-114-2613*	30 lbs	74C5-114-2613*	36 lbs	75C5-114-2613	44 lbs
Insulated DuraTherm Ceiling Liner (White)	73C5-114-2614*	30 lbs	74C5-114-2614*	36 lbs	75C5-114-2614	44 lbs
Motion Sensor Ceiling Lights (Set of 2/3/4)	LK1-121-02	5 lbs	LK1-121-03	6 lbs	LK1-121-03	6 lbs

DOOR LINER

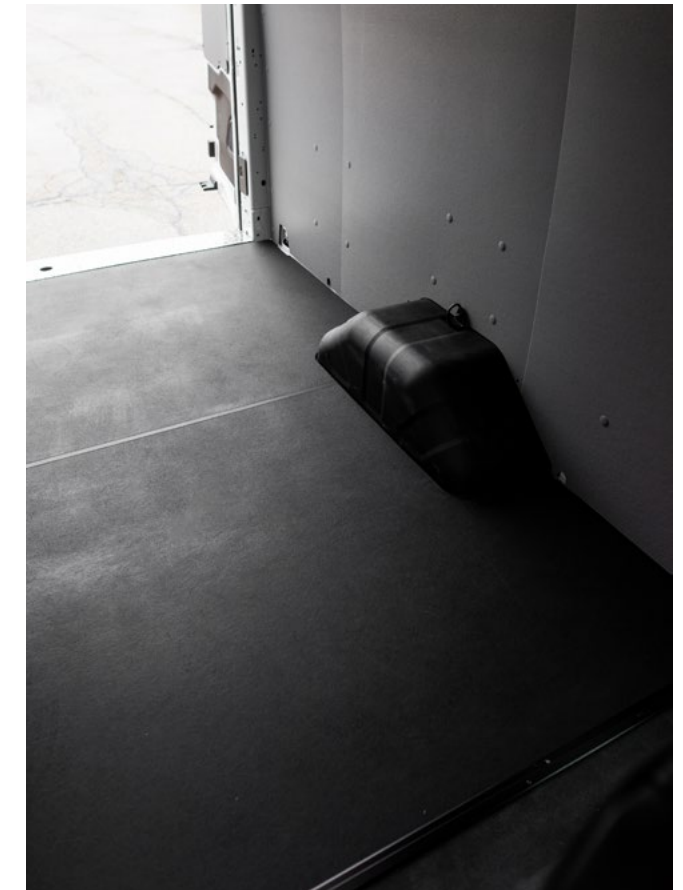
Insulated DuraTherm Rear Door Liner (Grey)	70C3-114-2613*	12 lbs	70C3-114-2613*	12 lbs	70C3-114-2613*	12 lbs
Insulated DuraTherm Rear Door Liner (White)	70C3-114-2614*	12 lbs	70C3-114-2614*	12 lbs	70C3-114-2614*	12 lbs
EconoLite Door Liner (Light Grey)	07CF00-20*	10 lbs	07CF00-20*	10 lbs	07CF00-20*	10 lbs

SECURIGRIP ACCESSORIES

Steel Rear Floor Threshold (Yellow)	708-151-1018	12 lbs	708-151-1011	12 lbs	708-151-1011	12 lbs
Steel Floor Threshold Set (Black)	708-151-1011	12 lbs	708-151-1011	12 lbs	708-151-1011	12 lbs
Transit Yellow Grab Handles Set	11F00-40	10 lbs	11F00-40	10 lbs	11F00-40	10 lbs

VAN LOCKS

SecuriLock - Double Lock Set	SL1-021-002	20 lbs	SL1-021-002	20 lbs	SL1-021-002	20 lbs
------------------------------	-------------	--------	-------------	--------	-------------	--------



Legend Kit in Transit 148" Extended Crew Van. Shown: StabiliGrip Rigid Floor, Insulated DuraTherm Wall Liner.

INSTALL TIMES*

Floors	30 minutes
Wall Liners	45 minutes
Ceiling Liners	75 minutes
Door Liners	30 minutes
Accessories	20 minutes

* Install times are averages, based on feedback from professional, experienced installers of Legend product.

***All part numbers shown in this brochure are standard configuration for simplification. Roof height & non-standard configurations must be added to part numbers when ordering, see to the right.**

Legend will not be held responsible for parts that are ordered incorrectly (i.e. for the wrong roof height vehicle).

ROOF HEIGHTS

Add to the end of the part number i.e. **731-043-7621.MR**

.LR	Low Roof
.MR	Mid Roof
.HR	High Roof

CONFIGURATION EXTENSIONS

Add to the end of the part number i.e. **741-135-6441.2**

.1	Dual Wheels	.9	Dual Wheels and OEM Trim
.2	Dual Side Sliding Doors	.N	No Side Doors
.3	Hinged Side Doors	.A	Rear AC
.4	with OEM door trim	.Y	Pro-Power on Board (E-Transit)
.5	Dual Doors and Dual Wheels		

MERCEDES



MODELS:

MERCEDES METRIS (126") RWB

MERCEDES METRIS (135") EWB

SPRINTER 144" WB LR, HR

SPRINTER 170" WB

SPRINTER 170" EXT. EWB

SPRINTER 144" WB CREW

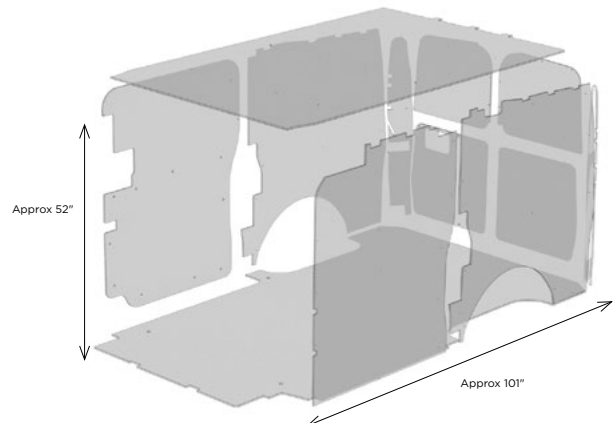
SPRINTER 170" WB CREW



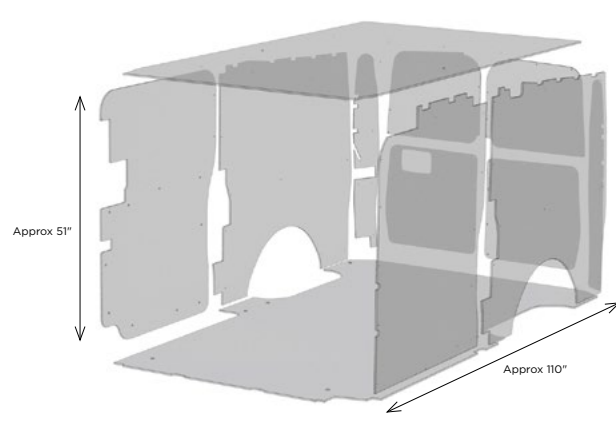
MERCEDES PRODUCT-IN-VEHICLE LAYOUTS

Drawings intended to show how parts arrange in their respective, specific vehicles. Drawings not to scale.

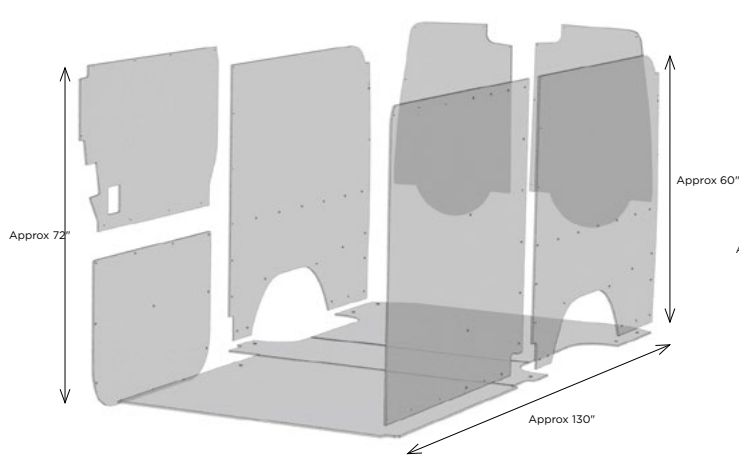
METRIS (126") RWB



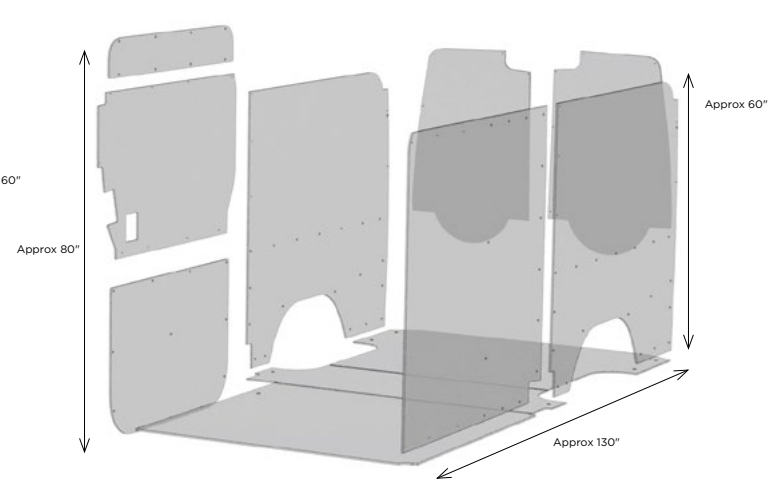
METRIS (135") EWB



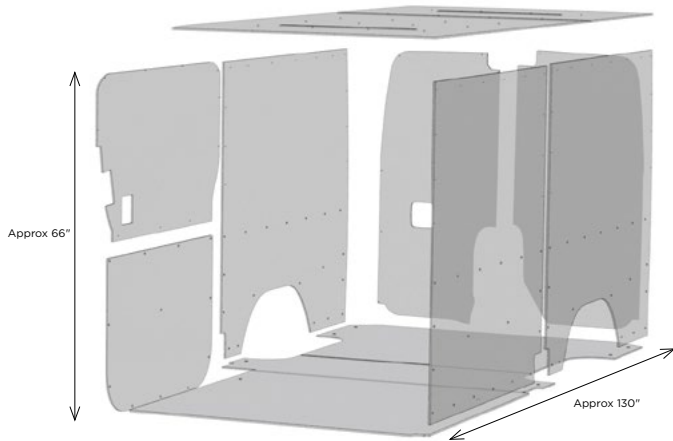
SPRINTER 144" WB CREW LR



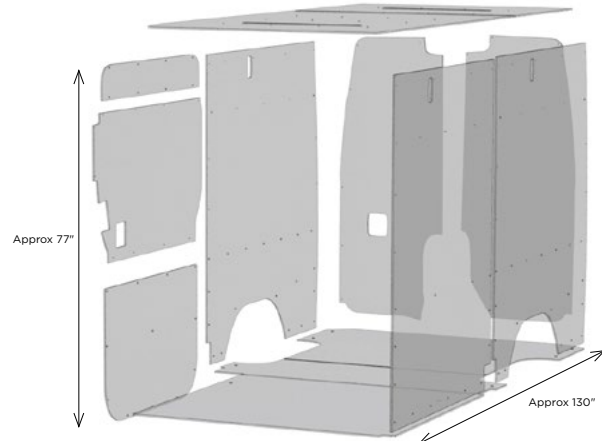
SPRINTER 144" WB CREW HR



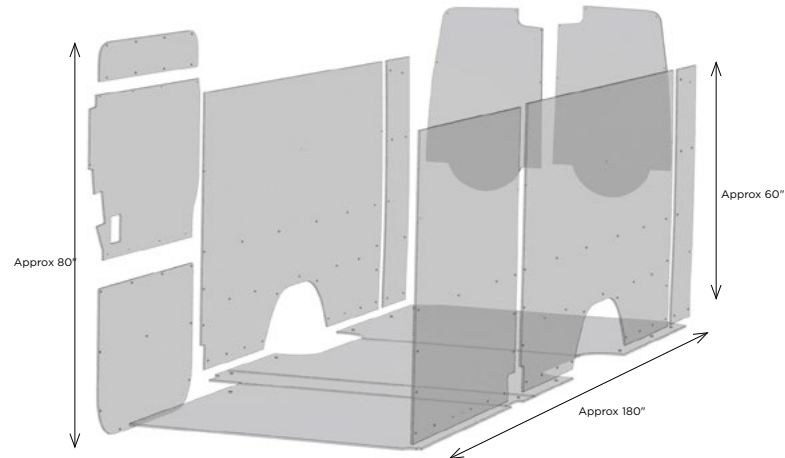
SPRINTER 144" WB LR



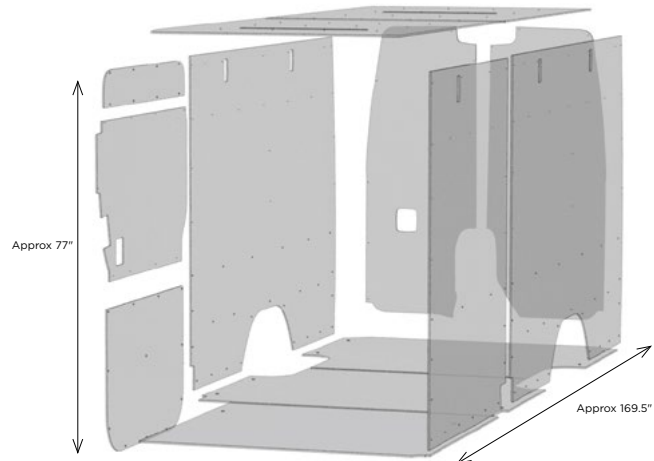
SPRINTER 144" WB HR



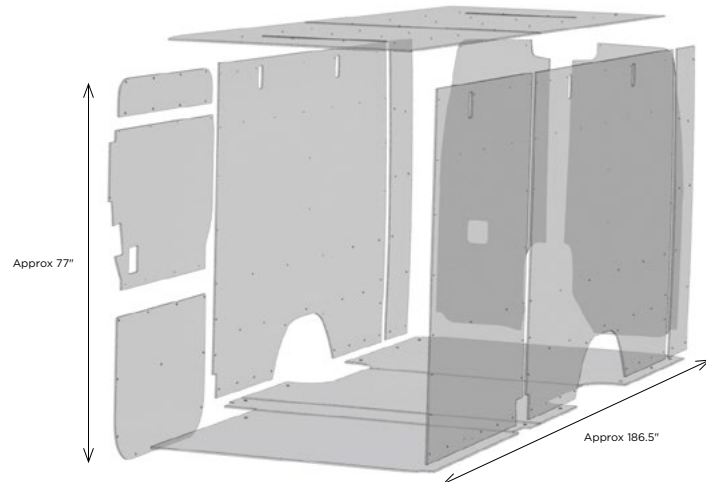
SPRINTER 170" WB CREW



SPRINTER 170" WB



SPRINTER 170" EXT. WB



MERCEDES PARTS



METRIS (126" RWB)



METRIS (135" EWB)



SPRINTER 144" WB



SPRINTER 170" WB



SPRINTER 170" EXT. WB

FLAGSHIP FLOORS

StabiliGrip Rigid Floor with Sills	151-135-6441	92 lbs	111-135-6441	98 lbs	121-135-6441	129 lbs	131-135-6441	178 lbs	141-135-6441	193 lbs
StabiliGrip Rigid Floor w/o Sills	151-135-6441	92 lbs	111-135-6441	98 lbs	122-135-6441	129 lbs	132-135-6441	178 lbs	142-135-6441	193 lbs
EVOLVE Lightweight Floor with Sills	151-123-6441	43 lbs	111-123-6441	46 lbs	121-135-6441	61 lbs	131-135-6441	84 lbs	141-135-6441	91 lbs
EVOLVE Lightweight Floor w/o Sills	151-123-6441	43 lbs	111-123-6441	46 lbs	122-135-6441	61 lbs	132-135-6441	84 lbs	142-135-6441	91 lbs
AutoMat-Bar Rubber Mat with Sills	151-043-7621	67 lbs	111-043-7621	70 lbs	121-043-7021	66 lbs	131-043-7021	90 lbs	141-043-7021	100 lbs
AutoMat-Bar Rubber Mat w/o Sills	152-043-7621	67 lbs	112-043-7621	70 lbs	122-043-7021	66 lbs	132-043-7021	90 lbs	142-043-7021	100 lbs

OTHER FLOORS

EconoFloor Rigid Floor	01F01-33	37 lbs	01F02-33	45 lbs	01M02-33	108 lbs	01M03-33	135 lbs	01M04-33	150 lbs
KK-Plus Plywood Floor	711-112-4442	40 lbs	721-112-4542	49 lbs	121-112-4442	118 lbs	131-112-4442	147 lbs	141-112-4442	164 lbs

WHEEL WELL COVERS

Sprinter Wheel Well Cover Set					1-WWC-11	7 lbs	1-WWC-11	7 lbs	1-WWC-11	7 lbs
-------------------------------	--	--	--	--	----------	-------	----------	-------	----------	-------

WALL LINER

Insulated DuraTherm Wall Liner (Grey)	154-114-2613	22 lbs	114-114-2613	25 lbs	124-114-2613*	36 lbs	134-114-2613*	53 lbs	144-114-2613*	70 lbs
Insulated DuraTherm Wall Liner (White)	154-114-2614	22 lbs	114-114-2614	25 lbs	124-114-2614*	36 lbs	134-114-2614*	53 lbs	144-114-2614*	70 lbs
EconoLite Wall Liner (Light Grey)	05M01-20	21 lbs	05M05-20	24 lbs	05F03-20*	26 lbs	05F04-20*	28 lbs	05F05-20*	30 lbs

CEILING LINER

Insulated DuraTherm Ceiling Liner (Grey)	155-114-2613	16 lbs	115-114-2613	18 lbs	125-114-2613*	25 lbs	135-114-2613*	29 lbs	145-114-2613*	32 lbs
Insulated DuraTherm Ceiling Liner (White)	155-114-2614	16 lbs	115-114-2614	18 lbs	125-114-2614*	25 lbs	135-114-26134*	29 lbs	145-114-2614*	32 lbs
Motion Sensor Ceiling Lights (Set of 2/3/4)	LK1-121-02	5 lbs	LK1-121-02	5 lbs	LK1-121-02	5 lbs	LK1-121-03	6 lbs	LK1-121-04*	7 lbs

DOOR LINER

Insulated DuraTherm Door Liner (Grey)	103-114-2613	20 lbs	103-114-2613	20 lbs	103-114-2613*	20 lbs	103-114-2613*	20 lbs	103-114-2613*	20 lbs
Insulated DuraTherm Door Liner (White)	103-114-2614	20 lbs	103-114-2614	20 lbs	103-114-2614*	20 lbs	103-114-2614*	20 lbs	103-114-2614*	20 lbs
EconoLite Door Liner (Light Grey)	07M01-20	7 lbs	07M05-20	7 lbs	07M00-20*	9 lbs	07M00-20*	9 lbs	07M00-20*	9 lbs

SECURIGRIP ACCESSORIES

Steel Floor Threshold Set (Yellow)					109-151-1018	6 lbs	109-151-1018	6 lbs	109-151-1018	6 lbs
Steel Floor Threshold Set (Black)					109-151-1011	6 lbs	109-151-1018	6 lbs	109-151-1018	6 lbs

VAN LOCKS

SecuriLock - Double Lock Set	SL1-021-002	20 lbs	SL1-021-002	20 lbs	SL1-021-002	20 lbs	SL1-021-002	20 lbs	SL1-021-002	20 lbs
------------------------------	-------------	--------	-------------	--------	-------------	--------	-------------	--------	-------------	--------

INSTALL TIMES*

Floors	30 minutes
Wall Liners	45 minutes
Ceiling Liners	75 minutes
Door Liners	30 minutes
Accessories	20 minutes

* Install times are averages, based on feedback from professional, experienced installers of Legend product.

***All part numbers shown in this brochure are standard configuration for simplification. Roof height & non-standard configurations must be added to part numbers when ordering, see to the right.**

Legend will not be held responsible for parts that are ordered incorrectly (i.e. for the wrong roof height vehicle).

ROOF HEIGHTS

Add to the end of the part number
i.e. 124-114-2613.HR

.LR	Low Roof
.MR	Mid Roof
.HR	High Roof

CONFIGURATION EXTENSIONS

Add to the end of the part number i.e. 131-135-6441.1

.1	Dual Wheels
.2	Dual Side Sliding Doors
.5	Dual Doors and Dual Wheels
.6	Super Single Sprinter
.8	Super Single and Dual Sliding Doors
.N	No Side Doors

MERCEDES PARTS



SPRINTER 144" WB CREW



SPRINTER 170" WB CREW

FLAGSHIP FLOORS

StabiliGrip Rigid Floor with Sills	12C1-135-6441	134 lbs	13C1-135-6441	182 lbs
StabiliGrip Rigid Floor w/o Sills	12C2-135-6441	134 lbs	13C1-135-6441	182 lbs
EVOLVE Lightweight Floor with Sills	12C1-123-6441	61 lbs	13C1-123-6441	84 lbs
EVOLVE Lightweight Floor w/o Sills	12C2-123-6441	61 lbs	13C2-123-6441	84 lbs
AutoMat-Bar Rubber Mat with Sills	12C1-043-7321	96 lbs	13C1-043-7021	70 lbs
AutoMat-Bar Rubber Mat w/o Sills	12C2-043-7321	96 lbs	13C2-043-7021	70 lbs

OTHER FLOORS

EconoFloor Rigid Floor	01F01-33	37 lbs	01F02-33	45 lbs
KK-Plus Plywood Floor	711-112-4442	40 lbs	721-112-4542	49 lbs

WHEEL WELL COVERS

Sprinter Wheel Well Cover Set	1-WWC-11	7 lbs	1-WWC-11	7 lbs
-------------------------------	----------	-------	----------	-------

WALL LINER

Insulated DuraTherm Wall Liner (Grey)	12C4-114-2613	30 lbs	13C4-114-2613	53 lbs
Insulated DuraTherm Wall Liner (White)	12C4-114-2614	30 lbs	13C4-114-2614	53 lbs
EconoLite Wall Liner (Light Grey)	05CM02-20	26 lbs	05CM03-20	40 lbs

CEILING LINER

Insulated DuraTherm Ceiling Liner (Grey)	12C5-114-2613	29 lbs	13C5-114-2613	37 lbs
Insulated DuraTherm Ceiling Liner (White)	12C5-114-2614	29 lbs	13C5-114-2614	37 lbs
Motion Sensor Ceiling Lights (Set of 2/3/4)	LK1-121-03	6 lbs	LK1-121-04	7 lbs

DOOR LINER

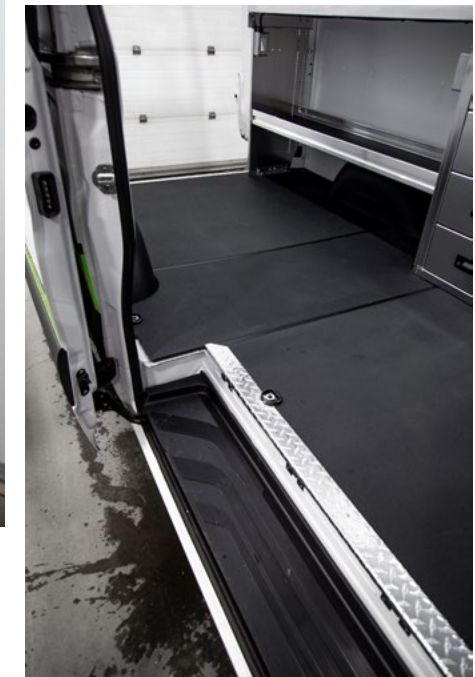
Insulated DuraTherm Rear Door Liner (Grey)	10C3-114-2613	23 lbs	10C3-114-2613*	23 lbs
Insulated DuraTherm Rear Door Liner (White)	10C3-114-2614	23 lbs	10C3-114-2614*	23 lbs
EconoLite Door Liner (Light Grey)	07CM00-20	15 lbs	07M00-20*	15 lbs

SECURIGRIP ACCESSORIES

Steel Floor Threshold Set (Yellow)	108-151-1018	4 lbs	108-151-1018	4 lbs
Steel Floor Threshold Set (Black)	108-151-1011	4 lbs	108-151-1011	4 lbs

VAN LOCKS

SecuriLock - Double Lock Set	SL1-021-002	20 lbs	SL1-021-002	20 lbs
------------------------------	-------------	--------	-------------	--------



Legend Complete Kit in Sprinter 144" WB. Shown: StabiliGrip Rigid Floor, Insulated DuraTherm Wall, Ceiling, and Door Liner in White, Wheel Well Covers, Aluminium Side & Rear Sill Plates.

INSTALL TIMES*

Floors	30 minutes
Wall Liners	45 minutes
Ceiling Liners	75 minutes
Door Liners	30 minutes
Accessories	20 minutes

* Install times are averages, based on feedback from professional, experienced installers of Legend product.

***All part numbers shown in this brochure are standard configuration for simplification. Roof height & non-standard configurations must be added to part numbers when ordering, see to the right.**

Legend will not be held responsible for parts that are ordered incorrectly (i.e. for the wrong roof height vehicle).

ROOF HEIGHTS

Add to the end of the part number
i.e. 124-114-2613.**HR**

.LR	Low Roof
.MR	Mid Roof
.HR	High Roof

CONFIGURATION EXTENSIONS

Add to the end of the part number i.e. 131-135-6441.**1**

.1	Dual Wheels
.2	Dual Side Sliding Doors
.5	Dual Doors and Dual Wheels
.6	Super Single Sprinter
.8	Super Single and Dual Sliding Doors
.N	No Side Doors



GM

MODELS:

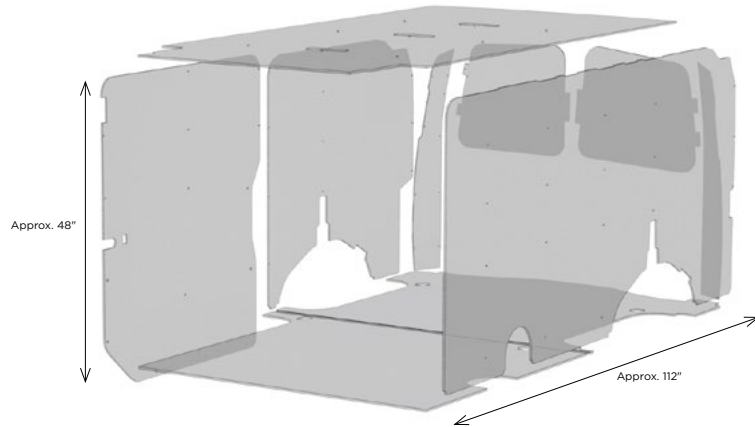
GMC SAVANA RWB/
CHEVROLET EXPRESS (135") RWB

GMC SAVANA EWB/
CHEVROLET EXPRESS (155") EWB

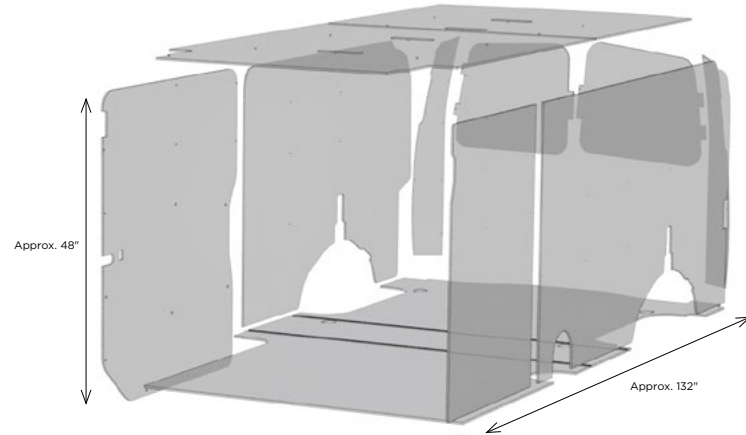


Drawings intended to show how parts arrange in their respective, specific vehicles. Drawings not to scale.

SAVANA/EXPRESS RWB (135" WB)



SAVANA/EXPRESS EWB (155" WB)



Legend Complete Interior Protection Kit in Chevy Express Regular Wheelbase Van. Shown: StabiliGrip Rigid Floor, Insulated DuraTherm Wall and Ceiling Liner, Aluminium Side & Rear Sill Plates.



**GMC SAVANA/CHEVY EXPRESS
REGULAR WB**



**GMC SAVANA/CHEVY EXPRESS
EXTENDED WB**

FLAGSHIP FLOORS

StabiliGrip Rigid Floor with Sills	311-135-6441	107 lbs	321-135-6441	130 lbs
StabiliGrip Rigid Floor w/o Sills	312-135-6441	107 lbs	322-135-6441	130 lbs
EVOLVE Lightweight Floor with Sills	311-123-6441	50 lbs	321-123-6441	60 lbs
EVOLVE Lightweight Floor w/o Sills	312-123-6441	50 lbs	322-123-6441	60 lbs
AutoMat-Bar Rubber Mat with Sills	311-043-7621	61 lbs	321-043-7321	73 lbs
AutoMat-Bar Rubber Mat w/o Sills	312-043-7621	61 lbs	322-043-7321	73 lbs

OTHER FLOORS

EconoFloor Rigid Floor	01G02-33	102 lbs	01G02-33	95 lbs
KK-Plus Plywood Floor	311-112-4442	102 lbs	321-112-4442	111 lbs

WALL LINER

Insulated DuraTherm Wall Liner (Grey)	314-114-2613	25 lbs	324-114-2613	30 lbs
Insulated DuraTherm Wall Liner (White)	314-114-2614	25 lbs	324-114-2614	30 lbs
EconoLite Wall Liner (Light Grey)	05G02-20	22 lbs	05G03-20	25 lbs

CEILING LINER

Insulated DuraTherm Ceiling Liner (Grey)	315-114-2613	19 lbs	325-114-2613	30 lbs
Insulated DuraTherm Ceiling Liner (White)	315-114-2614	19 lbs	325-114-2614	30 lbs
Motion Sensor Ceiling Lights (Set of 2/3/4)	LK1-121-02	5 lbs	LK1-121-03	6 lbs

DOOR LINER

Insulated DuraTherm Door Liner (Grey)	303-114-2613	10 lbs	303-114-2613	10 lbs
Insulated DuraTherm Door Liner (White)	303-114-2614	10 lbs	303-114-2614	10 lbs
EconoLite Door Liner (Light Grey)	07G00-20	8 lbs	07G00-20	8 lbs

SECURIGRIP ACCESSORIES

Steel Floor Threshold Set (Yellow)	309-151-1018	22 lbs	309-151-1018	22 lbs
Steel Floor Threshold Set (Black)	309-151-1011	22 lbs	309-151-1011	22 lbs
GM Yellow Grab Handles Set	11G00-40	10 lbs	11G00-40	10 lbs

VAN LOCKS

SecuriLock - Double Lock Set	SL1-021-002	20 lbs	SL1-021-002	20 lbs
------------------------------	-------------	--------	-------------	--------

INSTALL TIMES*

Floors	30 minutes
Wall Liners	45 minutes
Ceiling Liners	75 minutes
Door Liners	30 minutes
Accessories	20 minutes

* Install times are averages, based on feedback from professional, experienced installers of Legend product.

ROOF HEIGHTS

Add to the end of the part number
i.e. 634-114-2613.HR

.LR	Low Roof
.MR	Mid Roof
.HR	High Roof

CONFIGURATION EXTENSIONS

Add to the end of the part number i.e. 303-114-2613.3

.1	Dual Wheels
.2	Dual Side Sliding Doors
.3	Hinged Side Doors
.5	Dual Doors and Dual Wheels

All part numbers shown in this brochure are standard configuration for simplification. Roof height & non-standard configurations must be added to part numbers when ordering, see to the left.

Legend will not be held responsible for parts that are ordered incorrectly (i.e. for the wrong roof height vehicle).

RAM

RAM
1500
PROMASTER

MODELS:

PROMASTER CITY (122" WB)

PROMASTER 118" WB

PROMASTER 136" WB LR, HR

PROMASTER 159" WB

PROMASTER 159" EXT. WB

PROMASTER 118" WB CREW

PROMASTER 136" WB CREW

PROMASTER 159" WB CREW

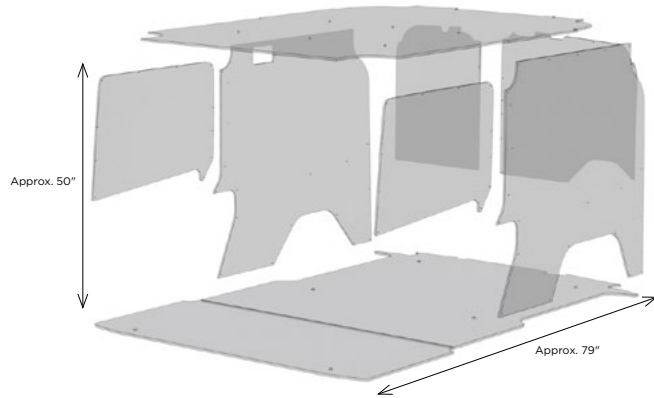
PROMASTER 159" EXT. WB CREW



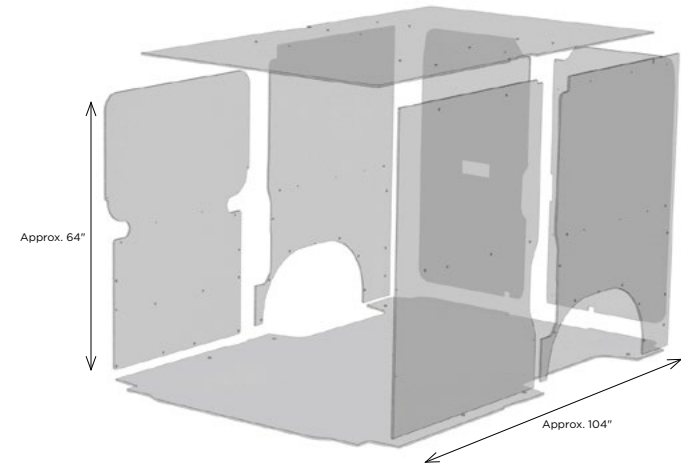
RAM PRODUCT-IN-VEHICLE LAYOUTS

Drawings intended to show how parts arrange in their respective, specific vehicles. Drawings not to scale.

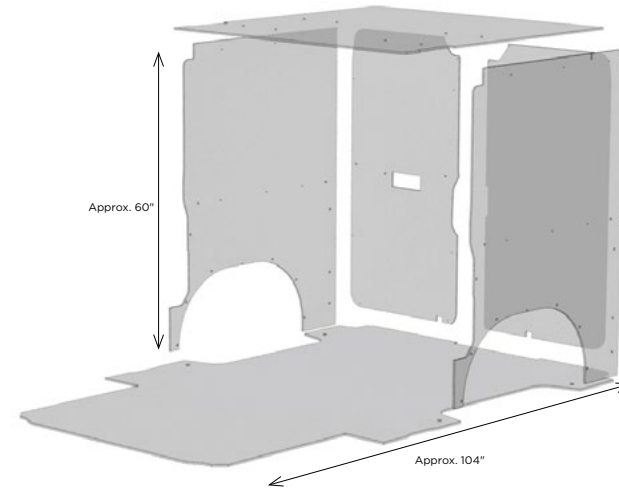
PROMASTER CITY (122" WB)



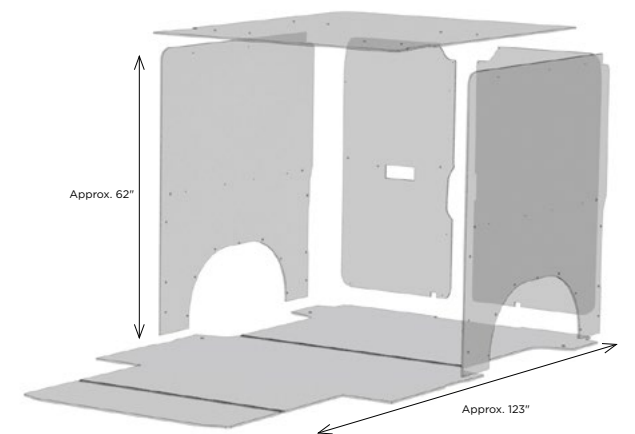
PROMASTER 118" WB



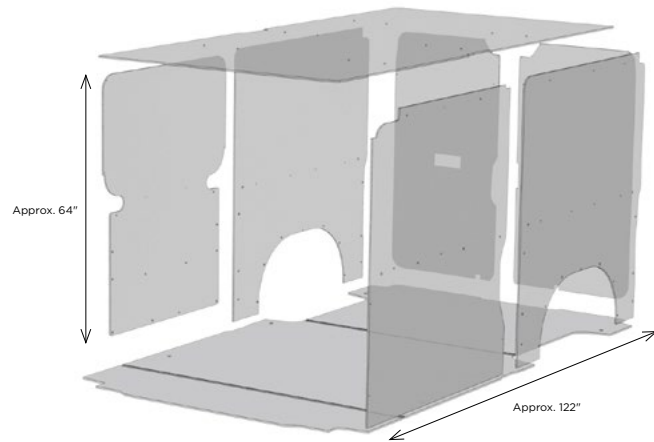
PROMASTER 118" WB CREW



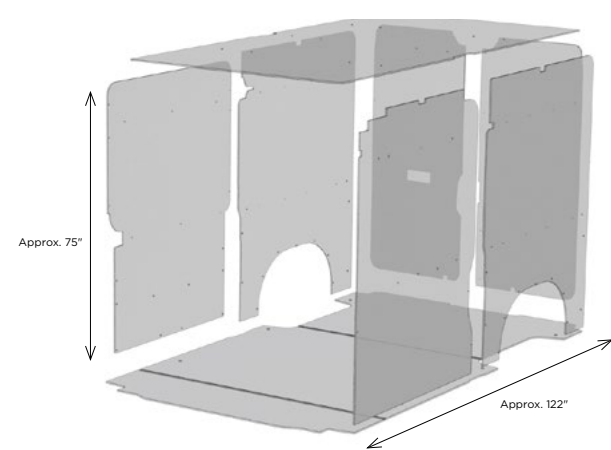
PROMASTER 136" WB CREW LR



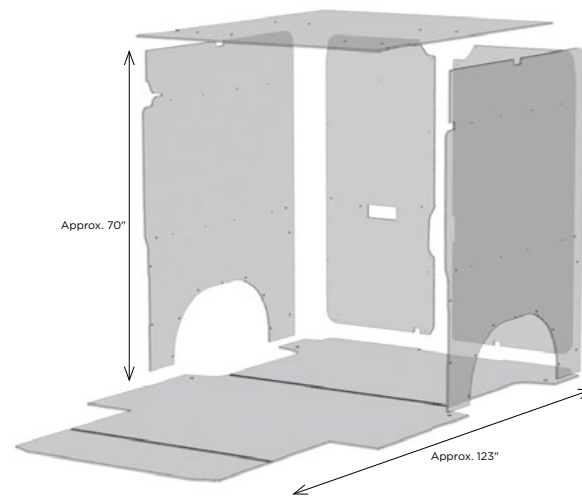
PROMASTER 136" WB LR



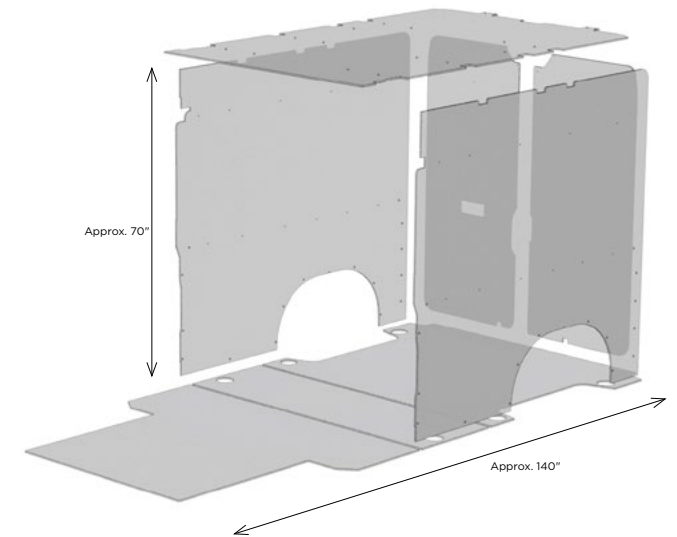
PROMASTER 136" WB HR



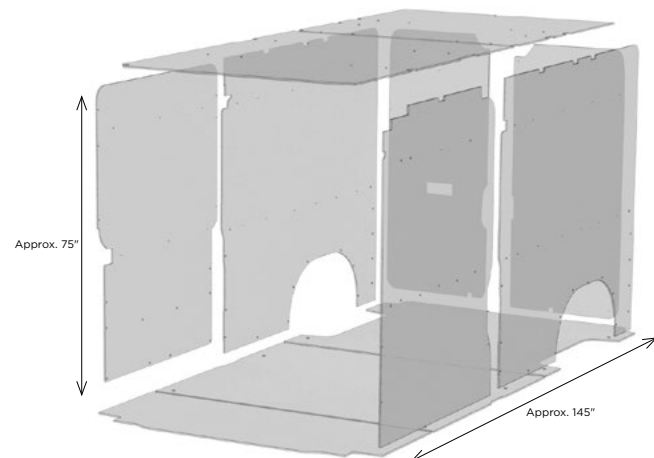
PROMASTER 136" WB CREW HR



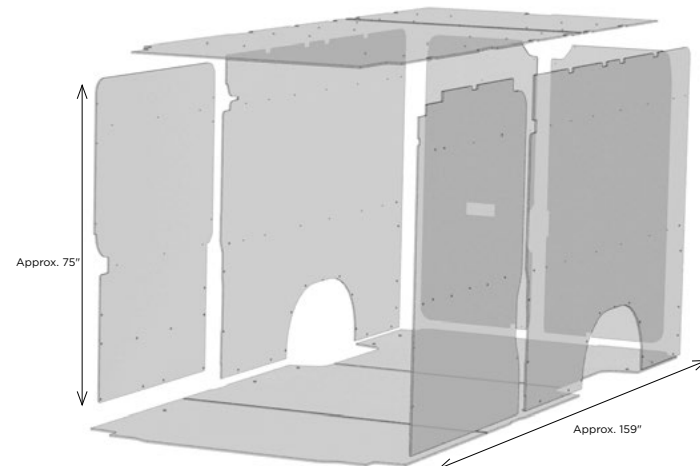
PROMASTER 159" WB CREW



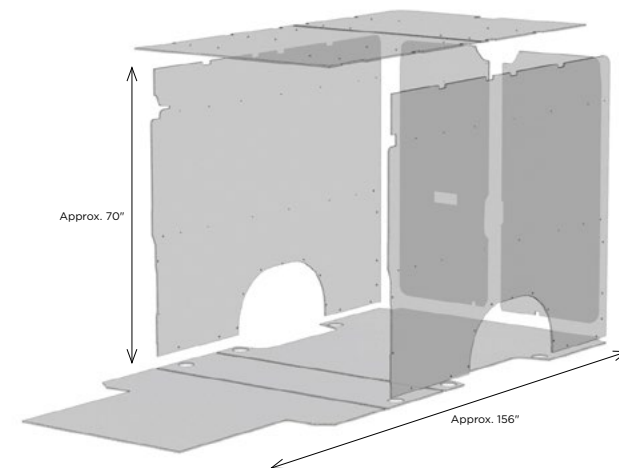
PROMASTER 159" WB



PROMASTER 159" EXT. WB



PROMASTER 159" EXT. WB CREW





PROMASTER CITY (122" WB)



PROMASTER 118" WB



PROMASTER 136" WB



PROMASTER 159" WB



PROMASTER 159" EXT. WB

FLAGSHIP FLOORS

StabiliGrip Rigid Floor with Sills	671-135-6441	82 lbs	621-135-6441	109 lbs	631-135-6441	130 lbs	641-135-6441	145 lbs	651-135-6441	173 lbs
StabiliGrip Rigid Floor w/o Sills	672-135-6441	82 lbs	622-135-6441	109 lbs	632-135-6441	130 lbs	642-135-6441	145 lbs	652-135-6441	173 lbs
EVOLVE Lightweight Floor with Sills	671-123-6441	33 lbs	621-123-6441	53 lbs	631-123-6441	51 lbs	641-123-6441	68 lbs	651-123-6441	81 lbs
EVOLVE Lightweight Floor w/o Sills	672-123-6441	33 lbs	622-123-6441	53 lbs	632-123-6441	51 lbs	642-123-6441	68 lbs	652-123-6441	81 lbs
AutoMat-Bar Rubber Mat with Sills	621-043-7621	56 lbs	621-043-7621	67 lbs	631-043-7621	67 lbs	641-043-7321	81 lbs	651-043-7021	85 lbs
AutoMat-Bar Rubber Mat w/o Sills	622-043-7621	56 lbs	622-043-7621	67 lbs	632-043-7621	67 lbs	642-043-7321	81 lbs	652-043-7021	85 lbs

OTHER FLOORS

EconoFloor Rigid Floor	01R01-33	74 lbs	01R02-33	85 lbs	01R03-33	95 lbs	01R04-33	121 lbs	01R05-33	133 lbs
KK-Plus Plywood Floor	711-112-4442	40 lbs	721-112-4542	49 lbs	731-112-4642	111 lbs	741-112-4642	119 lbs	751-112-4642	138 lbs

WHEEL WELL COVERS

ProMaster Wheel Well Cover Set					6-WWC-11	9 lbs	6-WWC-11	9 lbs	6-WWC-11	9 lbs
--------------------------------	--	--	--	--	----------	-------	----------	-------	----------	-------

WALL LINER

Insulated DuraTherm Wall Liner (Grey)	674-114-2613	10 lbs	624-114-2613	30 lbs	634-114-2613*	29 lbs	644-114-2613	34 lbs	654-114-2613	52 lbs
Insulated DuraTherm Wall Liner (White)	674-114-2614	10 lbs	624-114-2614	30 lbs	634-114-2614*	29 lbs	644-114-2614	34 lbs	654-114-2614	52 lbs
EconoLite Wall Liner (Light Grey)	05F01-20	15 lbs	05F02-20	15 lbs	05F03-20*	26 lbs	05F04-20	28 lbs	05F05-20	30 lbs

CEILING LINER

Insulated DuraTherm Ceiling Liner (Grey)	675-114-2613	12 lbs	625-114-2613	18 lbs	635-114-2613*	23 lbs	645-114-2613	26 lbs	655-114-2613	28 lbs
Insulated DuraTherm Ceiling Liner (White)	675-114-2614	12 lbs	625-114-2614	18 lbs	635-114-2614*	23 lbs	645-114-2614	26 lbs	655-114-2614	28 lbs
Motion Sensor Ceiling Lights (Set of 2/3/4)	LK1-121-02	5 lbs	LK1-121-02	5 lbs	LK1-121-02	5 lbs	LK1-121-03	6 lbs	LK1-121-04	7 lbs

DOOR LINER

Insulated DuraTherm Door Liner (Grey)	673-114-2613	8 lbs	623-114-2613	18 lbs	603-114-2613*	20 lbs	603-114-2613*	20 lbs	603-114-2613*	20 lbs
Insulated DuraTherm Door Liner (White)	673-114-2614	8 lbs	623-114-2614	18 lbs	603-114-2614*	20 lbs	603-114-2614*	20 lbs	603-114-2614*	20 lbs
EconoLite Door Liner (Light Grey)	07R01-20	7 lbs	07R02-20	8 lbs	07R00-20*	8 lbs	07R00-20*	8 lbs	07R00-20*	8 lbs

SECURIGRIP ACCESSORIES

Steel Floor Threshold Set (Yellow)					609-151-1018	10 lbs	609-151-1018	10 lbs	609-151-1018	10 lbs
Steel Floor Threshold Set (Black)					609-151-1011	10 lbs	609-151-1011	10 lbs	609-151-1011	10 lbs
ProMaster Yellow Grab Handles Set			11R00-40	10 lbs	11R00-40	10 lbs	11R00-40	10 lbs	11R00-40	10 lbs

VAN LOCKS

SecuriLock - Double Lock Set	SL1-021-002	20 lbs	SL1-021-002	20 lbs	SL1-021-002	20 lbs	SL1-021-002	20 lbs	SL1-021-002	20 lbs
------------------------------	-------------	--------	-------------	--------	-------------	--------	-------------	--------	-------------	--------

INSTALL TIMES*

Floors	30 minutes
Wall Liners	45 minutes
Ceiling Liners	75 minutes
Door Liners	30 minutes
Accessories	20 minutes

* Install times are averages, based on feedback from professional, experienced installers of Legend product.

***All part numbers shown in this brochure are standard configuration for simplification. Roof height & non-standard configurations must be added to part numbers when ordering, see to the right.**

Legend will not be held responsible for parts that are ordered incorrectly (i.e. for the wrong roof height vehicle).

ROOF HEIGHTS

Add to the end of the part number
i.e. 634-114-2613.HR

.LR	Low Roof
.MR	Mid Roof
.HR	High Roof

CONFIGURATION EXTENSIONS

Add to the end of the part number i.e. 651-135-6441.1

.1	Dual Wheels
.2	Dual Side Sliding Doors
.3	Hinged Side Doors
.5	Dual Doors and Dual Wheels



PROMASTER 136" WB CREW



PROMASTER 159" WB CREW



PROMASTER 159" EXT. WB CREW

FLAGSHIP FLOORS

StabiliGrip Rigid Floor with Sills	63C1-135-6441	90 lbs	64C1-135-6441	120 lbs	65C1-135-6441	160 lbs
StabiliGrip Rigid Floor w/o Sills	63C2-135-6441	90 lbs	64C2-135-6441	120 lbs	65C2-135-6441	160 lbs
EVOLVE Lightweight Floor with Sills	63C1-123-6441	61 lbs	64C1-123-6441	68 lbs	65C1-123-6441	78 lbs
EVOLVE Lightweight Floor w/o Sills	63C2-123-6441	61 lbs	64C1-123-6441	68 lbs	65C2-123-6441	78 lbs
AutoMat-Bar Rubber Mat with Sills	63C1-043-7621	58 lbs	64C1-043-7321	85 lbs	65C1-043-7321	85 lbs
AutoMat-Bar Rubber Mat w/o Sills	63C2-043-7621	58 lbs	64C2-043-7321	85 lbs	65C2-043-7321	85 lbs

OTHER FLOORS

EconoFloor Rigid Floor	01CR03-33	85 lbs	01CR04-33	121 lbs	01CR05-33	133 lbs
KK-Plus Plywood Floor	731-112-4542	70 lbs	731-112-4642	111 lbs	731-112-4642	111 lbs

WHEEL WELL COVERS

ProMaster Wheel Well Cover Set	6-WWC-11	9 lbs	6-WWC-11	9 lbs	6-WWC-11	9 lbs
--------------------------------	----------	-------	----------	-------	----------	-------

WALL LINER

Insulated DuraTherm Wall Liner (Grey)	63C4-114-2613*	36 lbs	64C4-114-2613	38 lbs	65C4-114-2613	38 lbs
Insulated DuraTherm Wall Liner (White)	63C4-114-2614*	36 lbs	64C4-114-2614	38 lbs	65C4-114-2614	38 lbs
EconoLite Wall Liner (Light Grey)	05CR03-20*	28 lbs	05CR04-20	32 lbs	05CR05-20	36 lbs

CEILING LINER

Insulated DuraTherm Ceiling Liner (Grey)	63C5-114-2613*	18 lbs	64C5-114-2613	38 lbs	65C5-114-2613	23 lbs
Insulated DuraTherm Ceiling Liner (White)	63C5-114-2614*	18 lbs	64C5-114-2614	38 lbs	65C5-114-2614	38 lbs
Motion Sensor Ceiling Lights (Set of 2/3/4)	LK1-121-02	5 lbs	LK1-121-02	5 lbs	LK1-121-02	5 lbs

DOOR LINER

Insulated DuraTherm Door Liner (Grey)	60C3-114-2613*	18 lbs	60C3-114-2613*	18 lbs	60C3-114-2614*	18 lbs
Insulated DuraTherm Door Liner (White)	60C3-114-2614*	18 lbs	60C3-114-2614*	18 lbs	60C3-114-2614*	18 lbs
EconoLite Door Liner (Light Grey)	07CR00-20*	12 lbs	07CR00-20*	12 lbs	07CR00-20*	12 lbs

SECURIGRIP ACCESSORIES

Steel Rear Floor Threshold (Yellow)	608-151-1018	8 lbs	608-151-1018	8 lbs	608-151-1018	8 lbs
Steel Rear Floor Threshold (Black)	608-151-1011	8 lbs	608-151-1018	8 lbs	11R00-40	10 lbs
ProMaster Yellow Grab Handles Set	11R00-40	10 lbs	11R00-40	10 lbs		

VAN LOCKS

SecuriLock - Double Lock Set	SL1-021-002	20 lbs	SL1-021-002	20 lbs	SL1-021-002	20 lbs
------------------------------	-------------	--------	-------------	--------	-------------	--------



Legend Products in a ProMaster 136" WB. Shown: Insulated DuraTherm White Wall Liner, StabiliGrip Floor, Wheel Well Covers, and Aluminium Side and Rear Sill Plates.

INSTALL TIMES*

Floors	30 minutes
Wall Liners	45 minutes
Ceiling Liners	75 minutes
Door Liners	30 minutes
Accessories	20 minutes

* Install times are averages, based on feedback from professional, experienced installers of Legend product.

***All part numbers shown in this brochure are standard configuration for simplification. Roof height & non-standard configurations must be added to part numbers when ordering, see to the right.**

Legend will not be held responsible for parts that are ordered incorrectly (i.e. for the wrong roof height vehicle).

ROOF HEIGHTS

Add to the end of the part number i.e. 634-114-2613.HR

.LR	Low Roof
.MR	Mid Roof
.HR	High Roof

CONFIGURATION EXTENSIONS

Add to the end of the part number i.e. 651-135-6441.1

.1	Dual Wheels
.2	Dual Side Sliding Doors
.3	Hinged Side Doors
.5	Dual Doors and Dual Wheels

**CONFIGURE FOR ALL
MAIN MAKES & MODELS!**

3d.legendfleet.com/configurator

EXPLORE THE PRODUCT IN 3D



TRANSIT



SPRINTER

SAVANA



PROMASTER



**THE FLOOR
OF THE FUTURE
IS COMING.**

2023.



THE UPFIT YOU DESERVE

[LEGENDSOFTHEROAD.COM](https://legendsoftheroad.com)

THE LOGO

represents the protection we offer our customers and their drivers — protecting their assets, their people and their profitability.

THE STRAPLINE

speaks directly to the van driver, reinforcing our promise to improve the ride for the legends of the road — by providing the upfit they deserve.

THE URL

represents our purpose, which runs through everything we do - Improving the ride for the legends of the road.



THE UPFIT YOU DESERVE

[LEGENDSOFTHEROAD.COM](https://legendsoftheroad.com)

CONTACT

NORTH AMERICA HEAD OFFICE & FACTORY
56957 Hwy 3 West, Tillsonburg, ON N4G 4G8
info@legendfleet.com
(519) 688 1043

UK & EUROPE HEAD OFFICE & FACTORY
20 Canley Road, Coventry Business Park; Coventry, CV5 6BH
contactus@legendfleet.com
+44 (0)2477 688088



